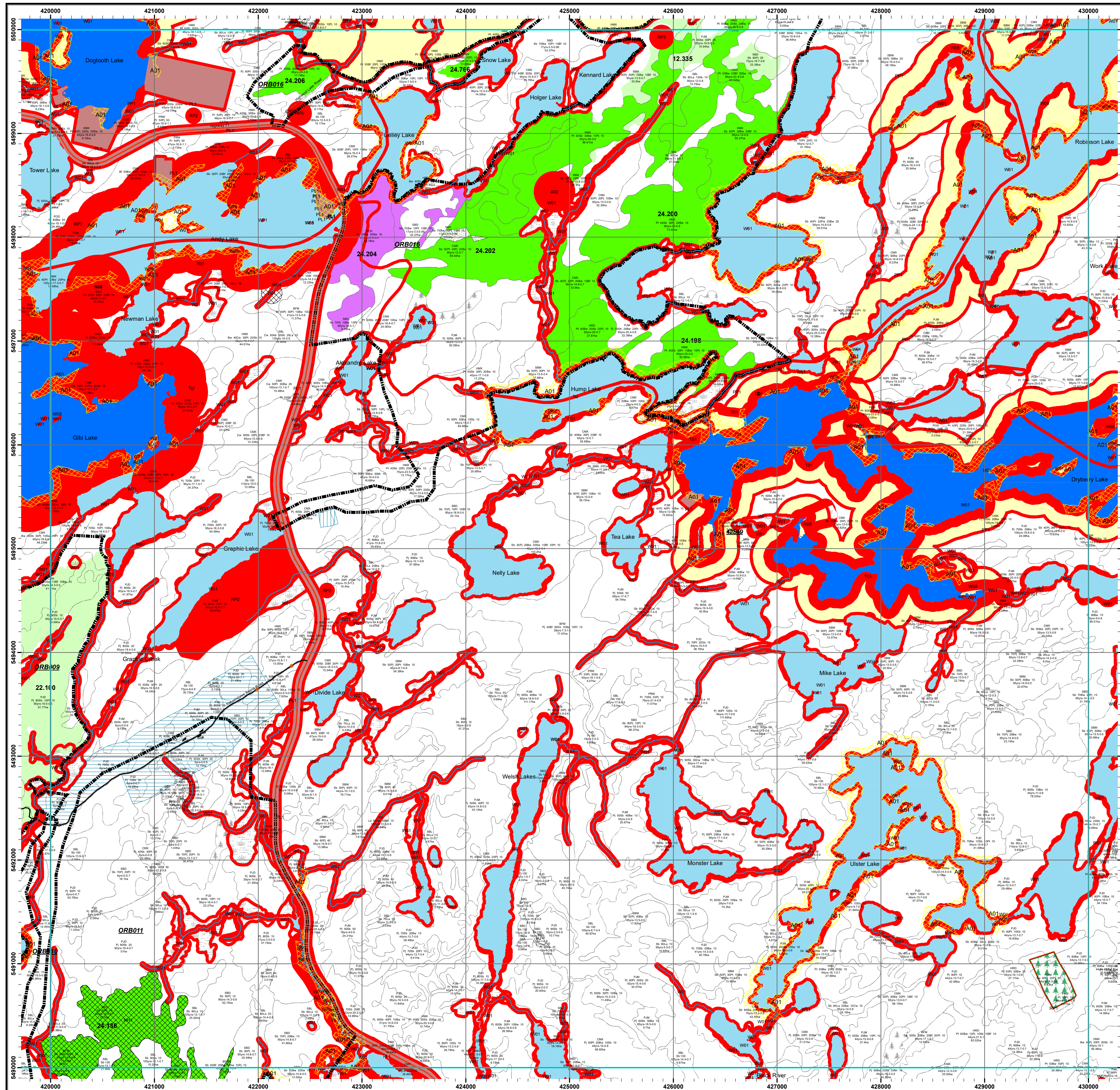
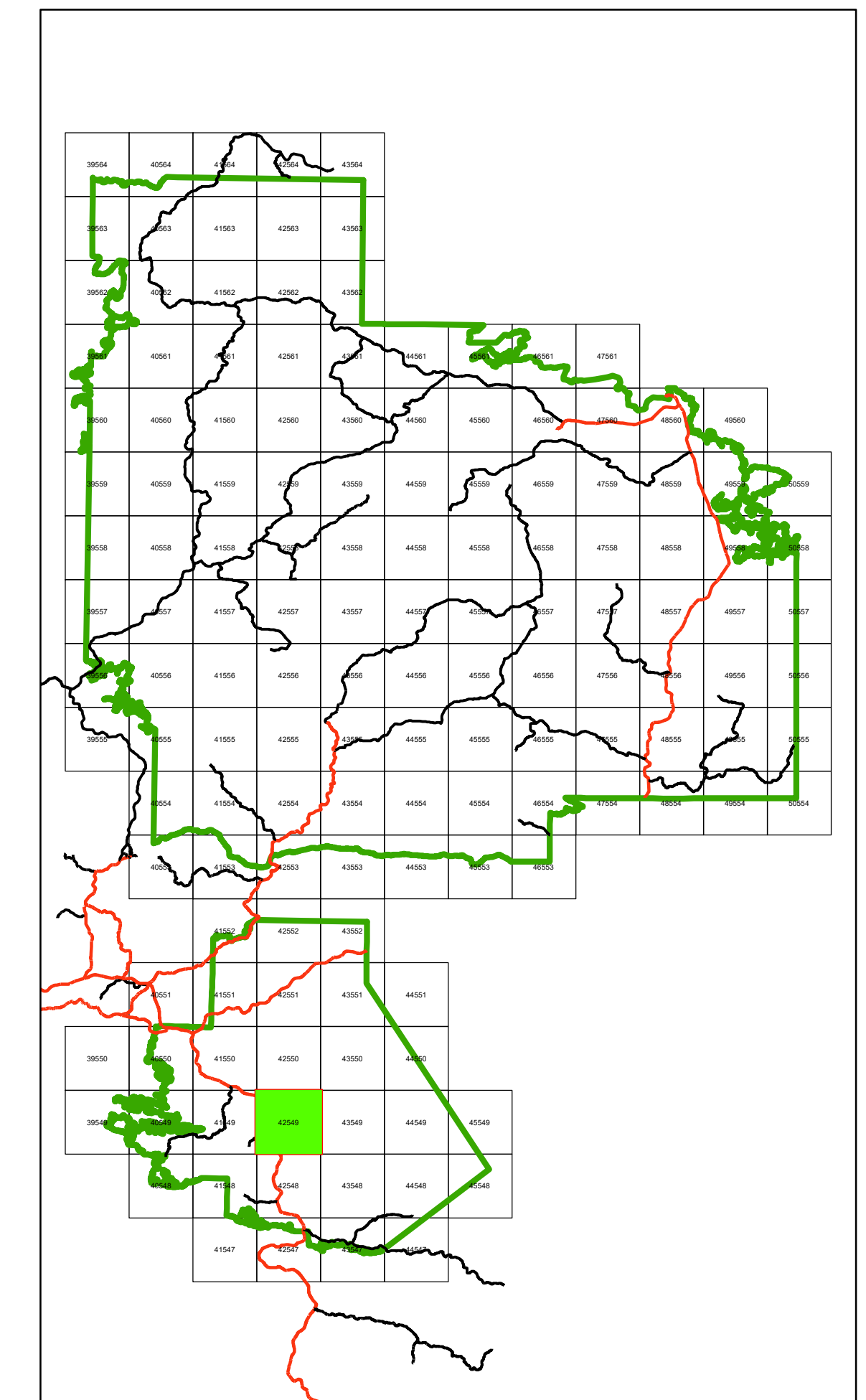


# Whiskey Jack Forest - MU490 2024-2034 Forest Management Plan Areas Selected for Operations Mapsheet: 42549



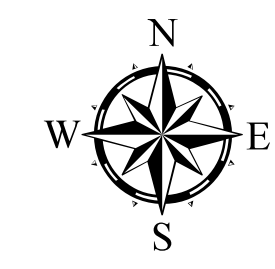
## Key Map



## Legend

Forestry Aggregate Pit	Park/Conservation Reserves
Communities	Whiskey Jack Forest
Water Crossing	Mapsheet
Trapper Cabin	Tree Improvement Area
Highway	Road Corridor
Primary	Archeological Potential Area - A01 (APA)
Branch	Operational Road Boundary
Operational	Treed Muskeg
Road Access Control	Open Muskeg
Railway Lines	Brush & Alder
Hydro Line	Rock
Natural Gas Pipeline	Non SFL Aggregate Permit
Canoe Route	Aggregate Extraction Area
Portage	Low Residual Zone
Permanent Stream	Modified Harvest
Intermittent Stream	No Cut Reserve
Cold Water Lake	Stand Boundary
Cool Water Lake	Planned Harvest
First Nation Reserve	Contingency
Patent Land / LUP	Bridging / Salvage
Crown Lease	

\*Stand Information\*  
Planned Forest Unit: HMX  
Sp. Comp: SB 50PJ 10  
Age, HT, Stocking,  
Hectares



### NOTES

North American Datum 1983  
UTM 6 degrees projection, Zone 15  
This map is illustrative only. Do not rely on it as being a precise indicator of routes, location of features, nor as a guide to navigation.  
Source of Information: Ontario Ministry of Natural Resources and Forestry District File. Information compiled from field survey data, historical records, stakeholders information, reports from public, and data from other ministries. While every effort has been made to ensure accuracy and correctness of the material presented on this map, the MNRF assumes no responsibility for errors or omissions.  
Fuel wood: All harvest blocks are generally eligible for fuel wood procurement, subject to the possession of a personal use or commercial fuel wood permit.  
Renewal and Tending: All harvest blocks are eligible for renewal and tending.

Copyright 2024 Kings Printer for Ontario  
Printed in Ontario, Canada

February, 2024



1:20,000

