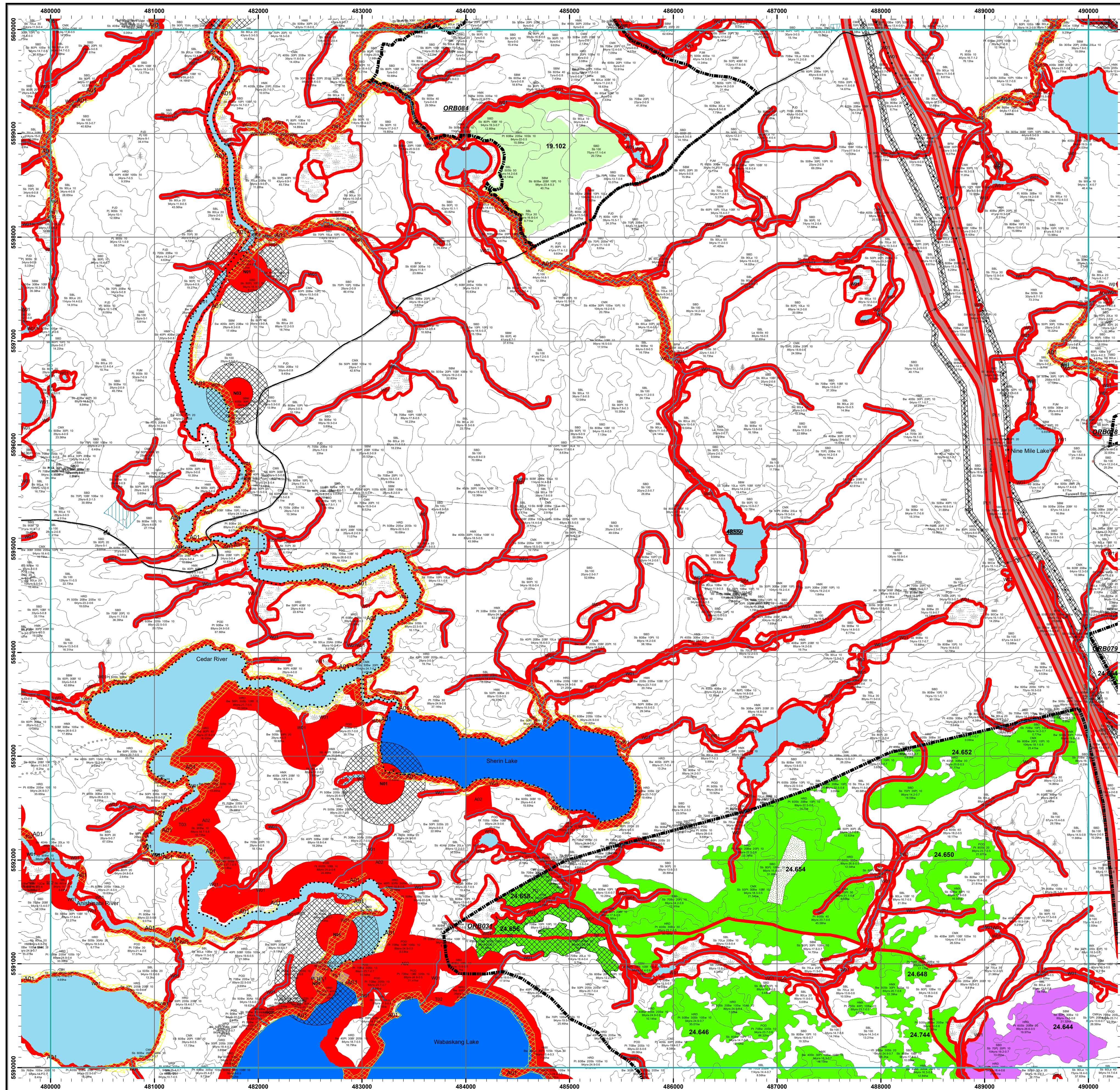
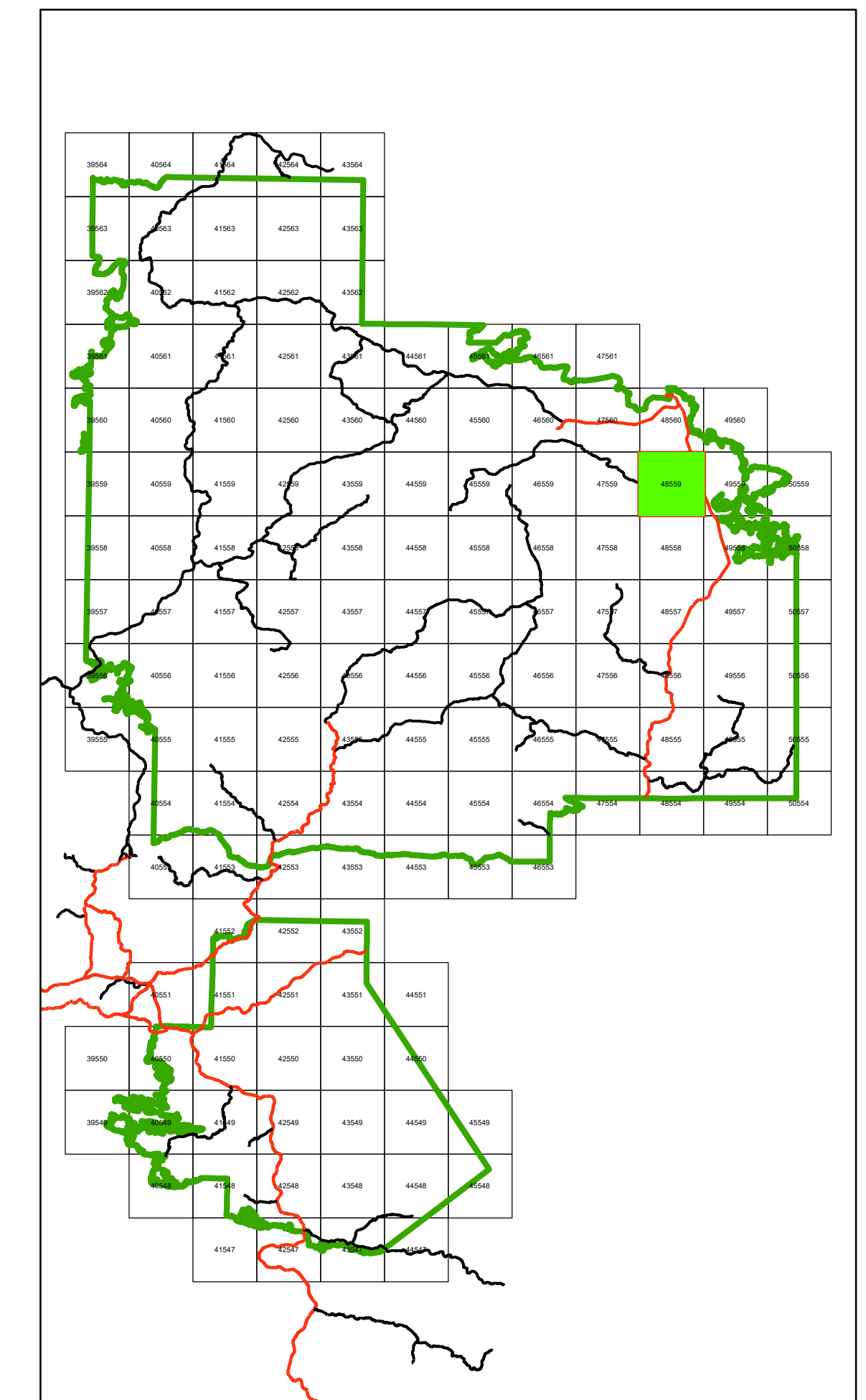


# Whiskey Jack Forest - MU490 2024-2034 Forest Management Plan Areas Selected for Operations Mapsheet: 48559



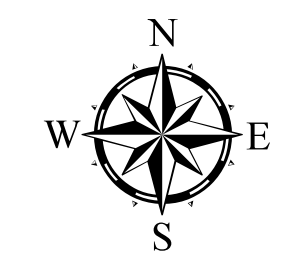
## Key Map



## Legend

Forestry Aggregate Pit	Park/Conservation Reserves
Communities	Whiskey Jack Forest
Water Crossing	Mapsheet
Trapper Cabin	Tree Improvement Area
Highway	Road Corridor
Primary	Archeological Potential Area - A01 (APA)
Branch	Operational Road Boundary
Operational	Treed Muskeg
Road Access Control	Open Muskeg
Railway Lines	Brush & Alder
Hydro Line	Rock
Natural Gas Pipeline	Non SFL Aggregate Permit
Canoe Route	Aggregate Extraction Area
Portage	Low Residual Zone
Permanent Stream	Modified Harvest
Intermittent Stream	No Cut Reserve
Cold Water Lake	Stand Boundary
Cool Water Lake	Planned Harvest
First Nation Reserve	Contingency
Patent Land / LUP	Bridging; Salvage
Crown Lease	

\*Stand Information\*  
Planned Forest Unit: HMX  
Sp. Comp: SB 50PJ 10  
Age, HT, Stocking,  
Hectares



NOTES  
North American Datum 1983  
UTM 6 degrees projection, Zone 15  
This map is illustrative only. Do not rely  
on it as being a precise indicator of routes,  
location of features, nor as a guide to navigation.  
Source of Information: Ontario Ministry of Natural  
Resources and Forestry District File. Information compiled from  
field survey data, historical records, stakeholders  
information, reports from public, and data from  
other ministries. While every effort has been made  
to ensure accuracy and correctness of the material  
presented on this map, the MNRF assumes no  
responsibility for errors or omissions.

Fuel wood: All harvest blocks are generally eligible  
for fuel wood procurement, subject to the possession  
of a personal use or commercial fuel wood permit.  
Renewal and Tending: All harvest blocks are eligible  
for renewal and tending.

Copyright 2024 Kings Printer for Ontario  
Printed in Ontario, Canada

February, 2024



1:20,000

