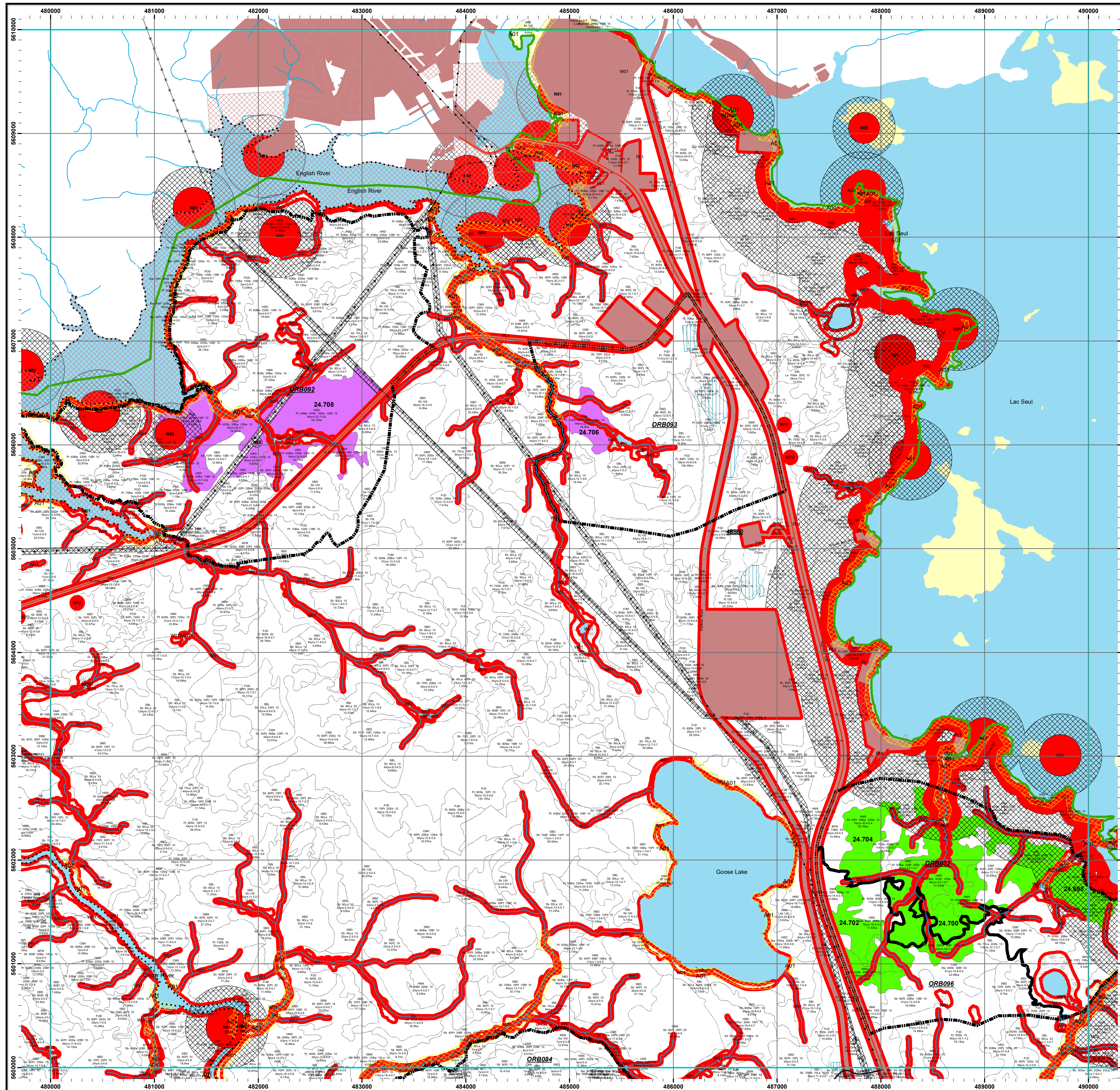
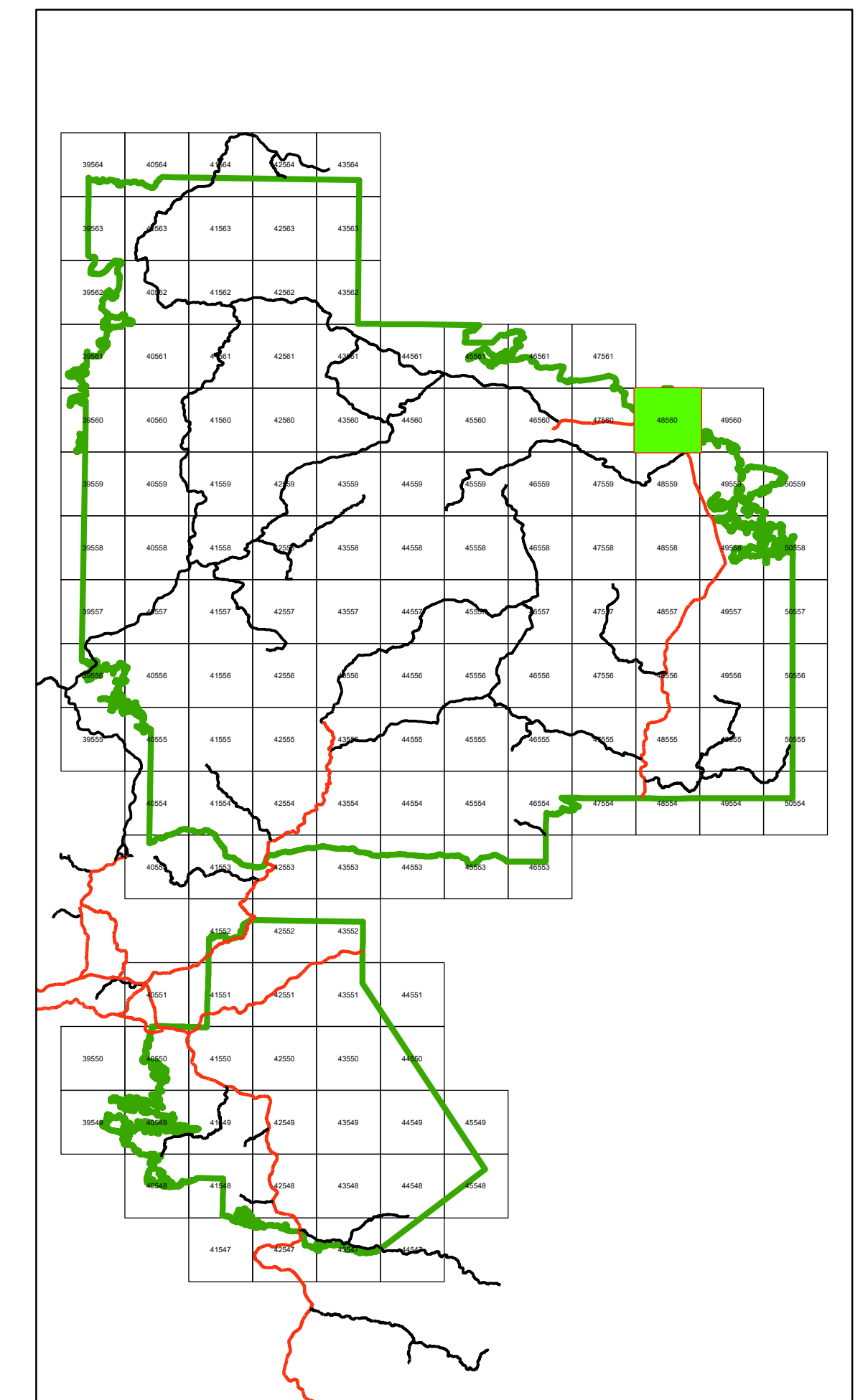


# Whiskey Jack Forest - MU490 2024-2034 Forest Management Plan Areas Selected for Operations Mapsheet: 48560

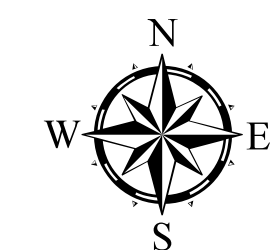
## Key Map



## Legend

	Forestry Aggregate Pit		Park/Conservation Reserves
	Communities		Whiskey Jack Forest
	Water Crossing		Mapsheet
	Trapper Cabin		Tree Improvement Area
	Highway		Road Corridor
	Primary		Archeological Potential Area - A01 (APA)
	Branch		Operational Road Boundary
	Operational		Treed Muskeg
	Road Access Control		Open Muskeg
	Railway Lines		Brush & Alder
	Hydro Line		Rock
	Natural Gas Pipeline		Non SFL Aggregate Permit
	Canoe Route		Aggregate Extraction Area
	Portage		Low Residual Zone
	Permanent Stream		Modified Harvest
	Intermittent Stream		No Cut Reserve
	Cold Water Lake		Stand Boundary
	Cool Water Lake		Planned Harvest
	First Nation Reserve		Contingency
	Patent Land / LUP		Bridging / Salvage
	Crown Lease		

"Stand Information"  
Planned Forest Unit: HMX  
Spp\_Comp: SB 90PJ 10  
Age, HT, Stocking,  
Hectares



### NOTES

North American Datum 1983  
UTM 6 degrees projection, Zone 15  
This map is illustrative only. Do not rely on it as being a precise indicator of routes, location of features, nor as a guide to navigation.  
Source of Information: Ontario Ministry of Natural Resources and Forestry District File. Information compiled from field survey data, historical records, stakeholders information, reports from public, and data from other ministries. While every effort has been made to ensure accuracy and correctness of the material presented on this map, the MNR assumes no responsibility for errors or omissions.  
Fuel wood: All harvest blocks are generally eligible for fuel wood procurement, subject to the possession of a personal use or commercial fuel wood permit.  
Renewal and Tending: All harvest blocks are eligible for renewal and tending.  
Copyright 2024 Kings Printer for Ontario  
Printed in Ontario, Canada



1:20,000

