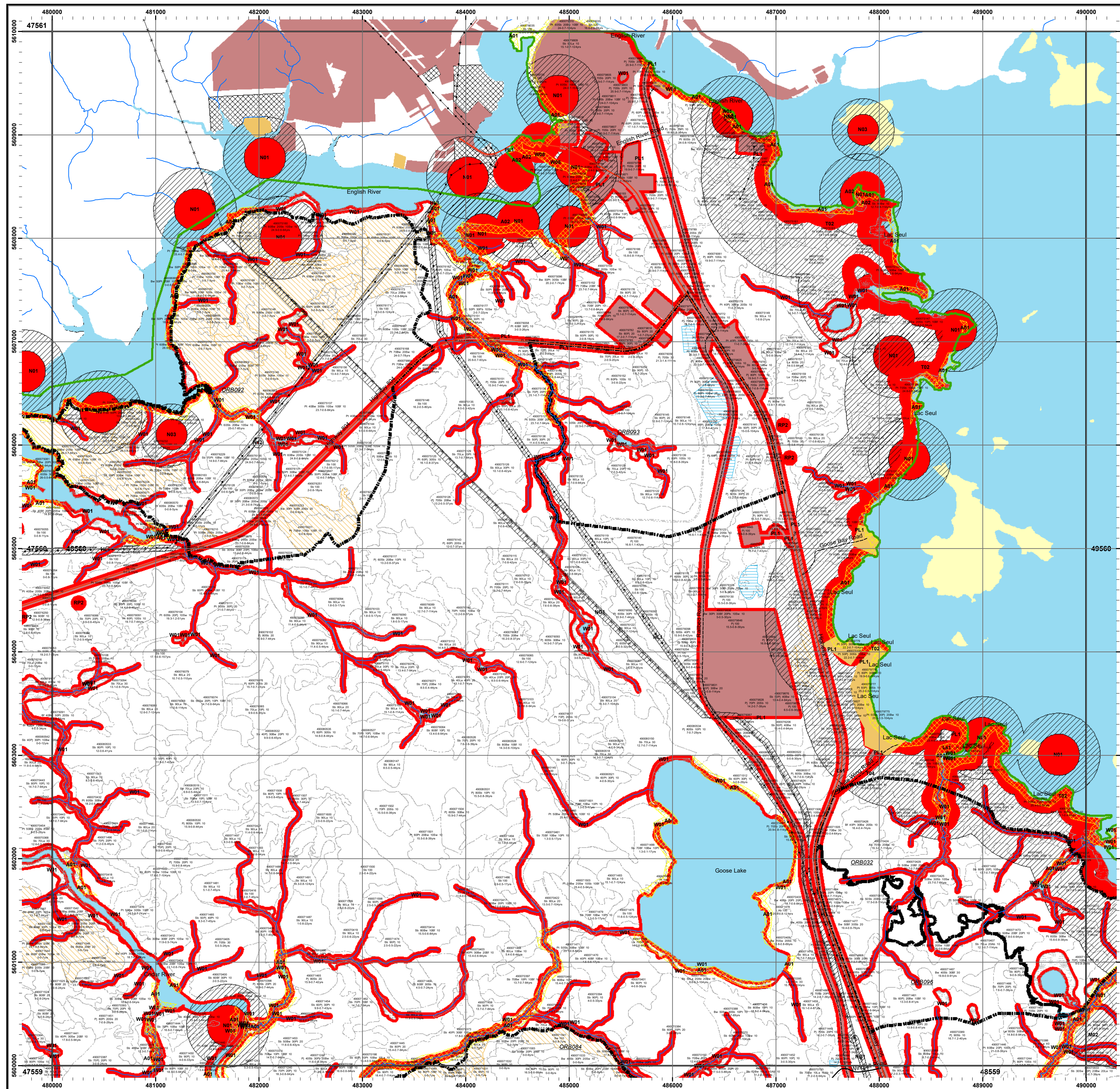
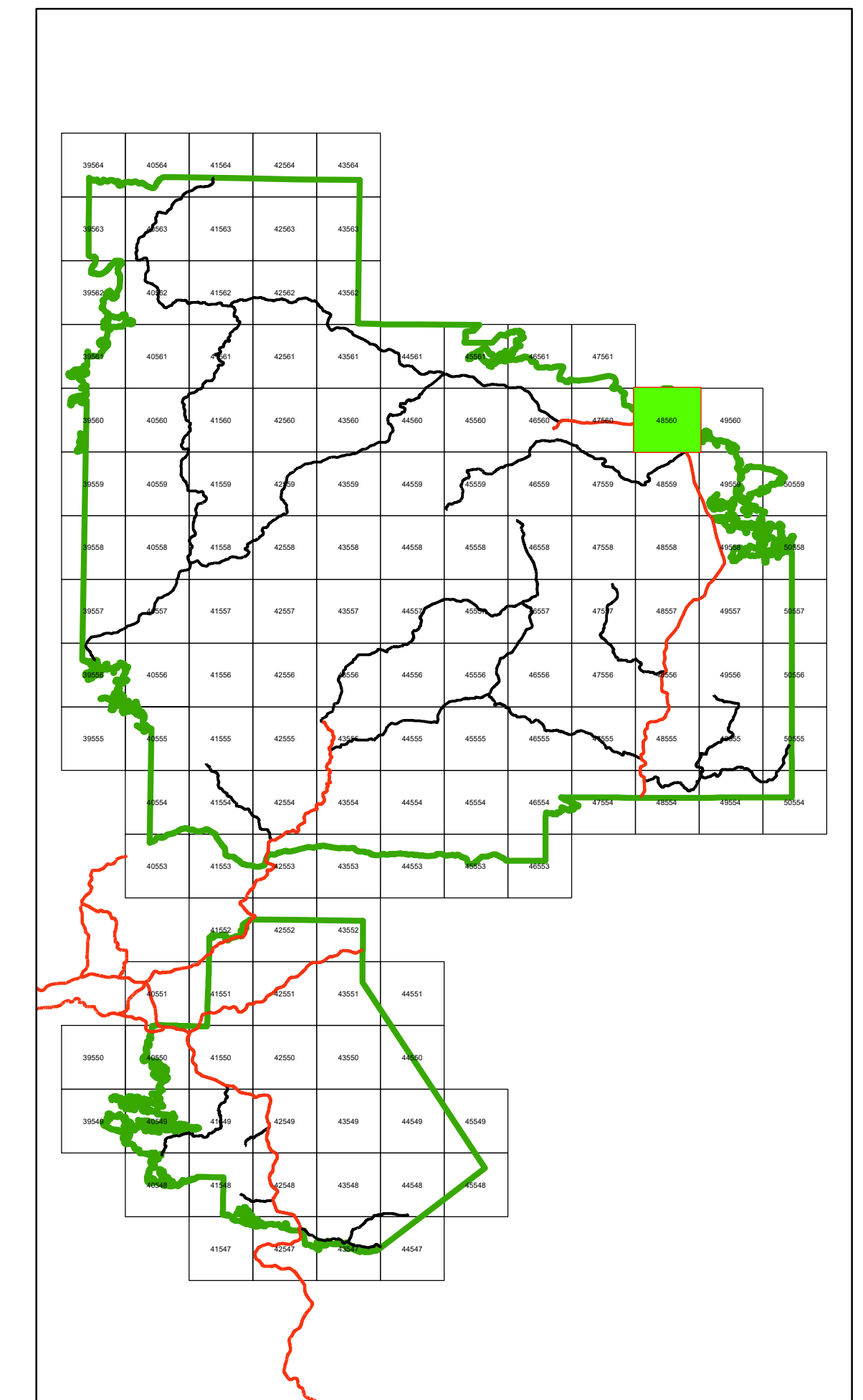


Whiskey Jack Forest 2024 - 2034 Forest Management Plan Annual Work Schedule Operations Map Year: 2026 - 2027 Mapsheet: 48560

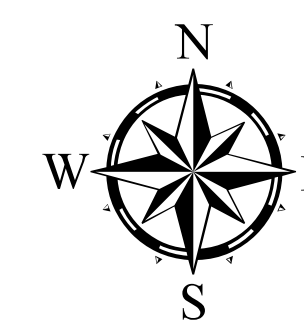
Key Map



Legend

● Access Control	■ Parks / Conservation Reserve
▲ Gravel Pits	■ Whiskey Jack Forest
● Proposed Water Crossing	□ Mapsheet
★ Proposed Water Crossing - APA	■ Non SFL Aggregate Permit Areas
● Existing Water Crossing	■ Planned Aggregate Extraction Area
⊗ Communities	□ Stand Boundary
● Trapper Cabin	■ Treed Muskeg
— Railway Line	■ Open Muskeg
— Highway	■ Brush / Alder
— MU490_26SRA	■ Rock
— Primary	■ Cold Water Lake
— Branch	■ Cool Water Lake
— Operational	■ High Potential Cultural Heritage - A01
— Permanent Stream	■ Road Corridor
— Intermittent Stream	■ Operational Road Boundary
— Transmission Lines	■ Modified Harvest
— Natural Gas Pipeline	■ No Cut Reserve
■ Patent Land	■ Scheduled Harvest
■ Low Residual Zone (5ha in 50ha)	■ PLANT
■ Crown Lease	■ SEED
■ First Nation Reserve	■ Establishment Assessment
■ Tourism Establishment	

Stand Number: 22690
Species Composition: Sb 80P1 10Bw 10
Height, Stocking, Age: 15.6-0.75-70yrs



NOTES

North American Datum 1983
UTM 6 degrees projection, Zone 15

This map is illustrative only. Do not rely on it as being a precise indicator of routes, location of features, nor as a guide to navigation.

Source of Information: Ontario Ministry of Natural Resources District File. Information compiled from field survey data, historical records, stakeholders information, reports from public, and data from other ministries. While ever effort has been made to ensure accuracy and correctness of the material presented on this map, the MNR assumes no responsibility for errors or omissions.

Fuel wood: All harvest blocks are generally eligible for fuel wood procurement, subject to the possession of a personal use or commercial fuel wood permit.

Renewal and Tending: All harvest blocks are eligible for renewal and tending.

Copyright 2025 Kings Printer for Ontario
Printed in Ontario, Canada



1:20,000

