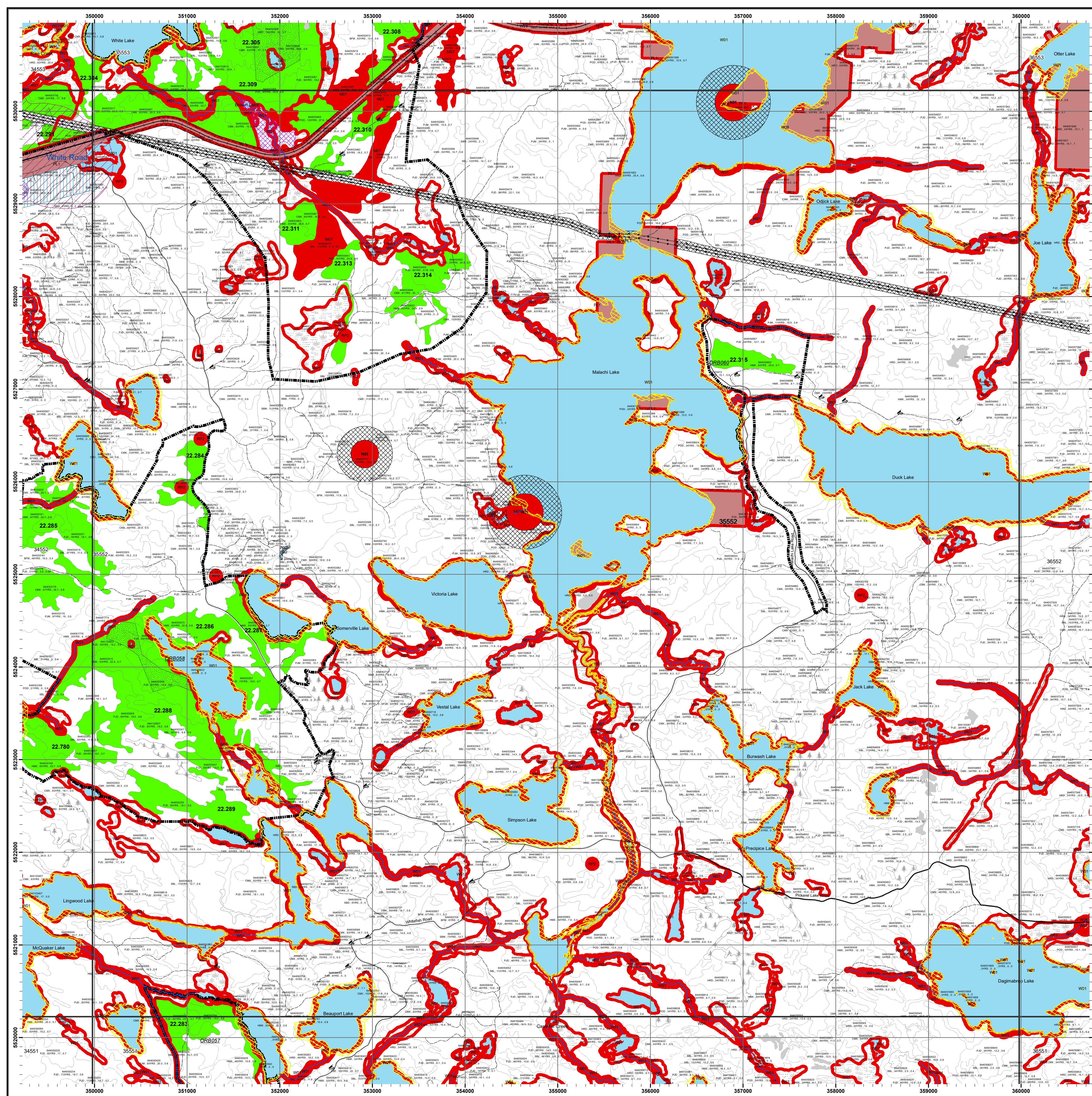
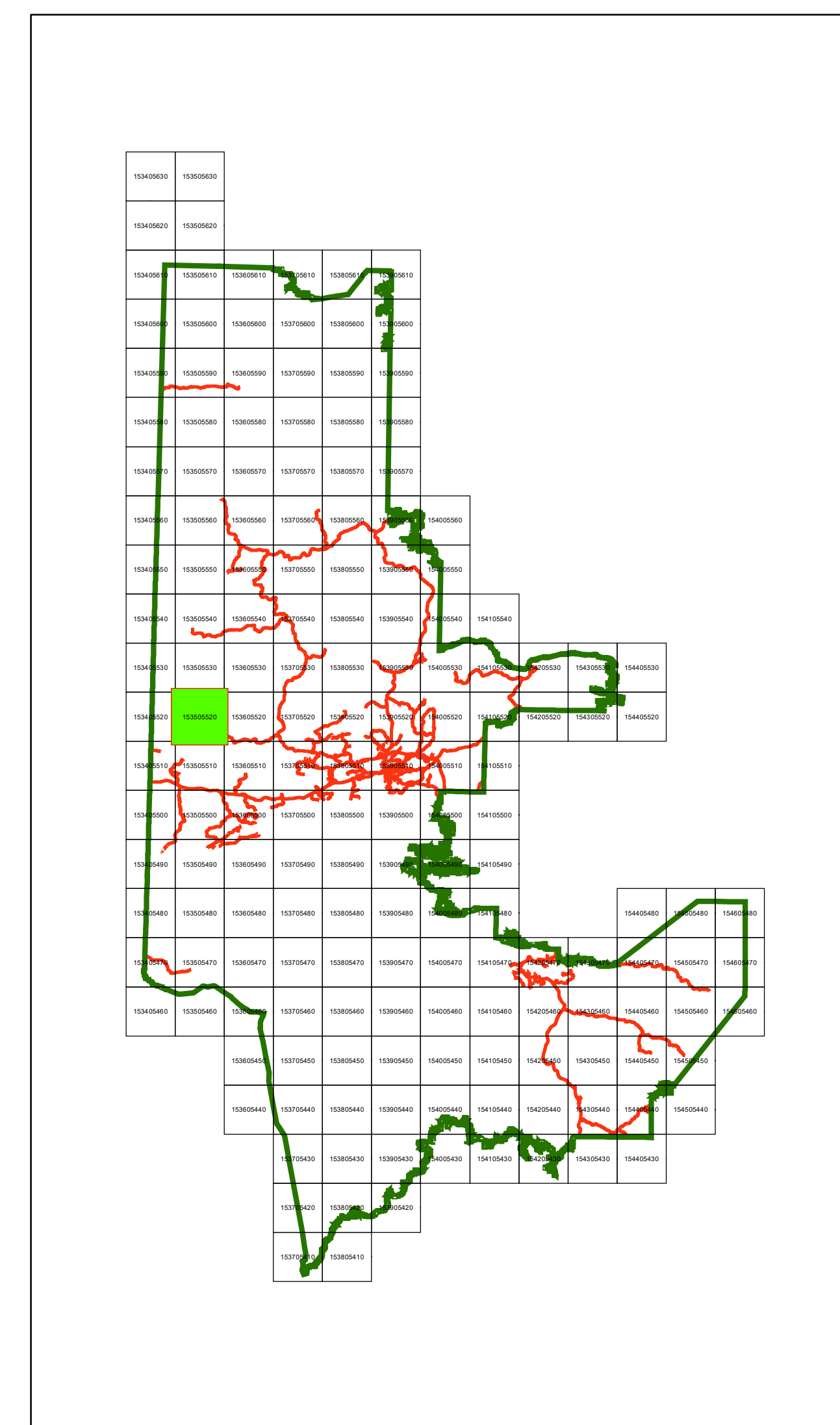




Kenora Forest 2022-2032 Forest Management Plan Area Selected for Operations Mapsheet: 35552

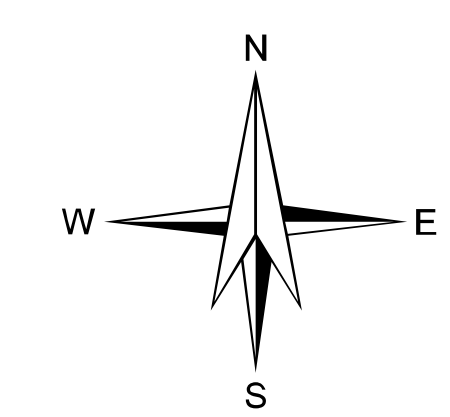
Key Map



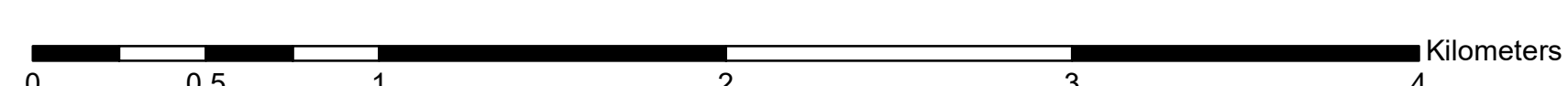
Legend

• Communities	Yellow Parks / Conservation Reserves
Category 9 Pit	Grey First Nations Reserve
Forestry Aggregate Pit	Yellow Archaeological Potential Areas
Permanent Road	White Road Corridors
Intermittent Road	Black Operational Road Boundaries
Access Controlled	Red Patent Land / LUP
Decommissioned	Light Green Brush/Alder
Highway	Dark Green Open Muskeg
Primary Road	Light Blue Rock
Branch Road	Dark Blue Treed Muskeg
Operational Road	White Crown Lease
Trails	Light Green Kame/LK Recreation Area
Hydro Line	Light Blue Moose Aquatic Feeding (MAFA)
Natural Gas Pipeline	Light Green Low Residual Zone
Rail Line	Dark Green Modified Harvest
Kenora SFL Boundary	Red No Cut Reserve
Mapsheet	White Forest Stand Boundaries
Cool	Light Green Wood Storage Yard
Cold	Light Green Planned Harvest
Non SFL Aggregate Permit	Light Green Contingency
Aggregate Extraction Area	Light Green Bridging

W01 AOC code (e.g.)
64400065 Stand Number
POD-93yrs-3.5-0.75 Forest Unit, Age, Height, Stocking



1:20,000



NOTES
North American Datum 1983
UTM 6 degrees projection, Zone 15
This map is for illustrative purposes only.
Do not rely on it as a precise indicator of routes,
location of features, or as a guide to navigation.

note:
- All areas identified for harvest are eligible for renewal activities
- Fuelwood is available in harvest blocks as per the conditions in the AWS text
- Contact Kenora District MNR for fuelwood permit

Map Created: November, 2021