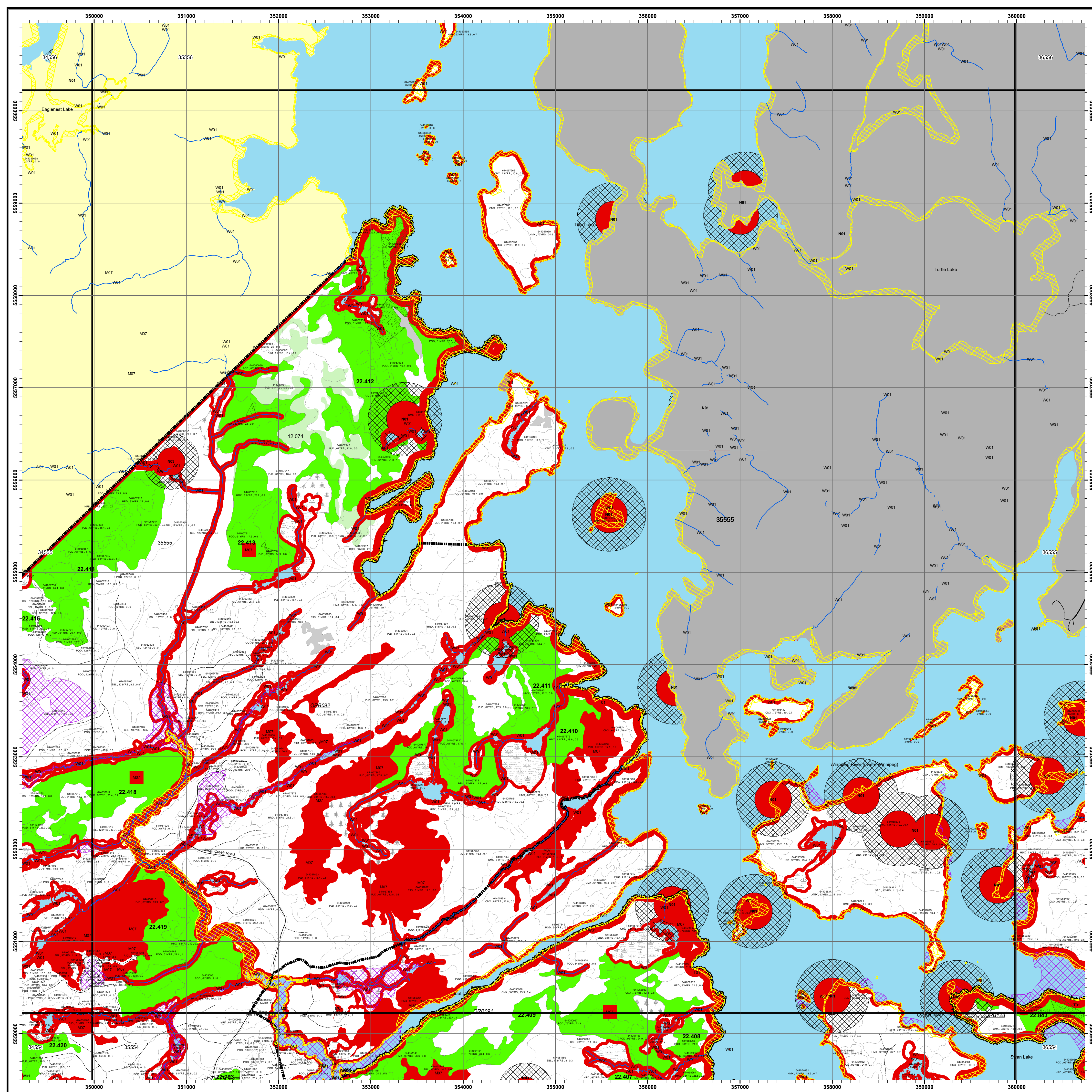
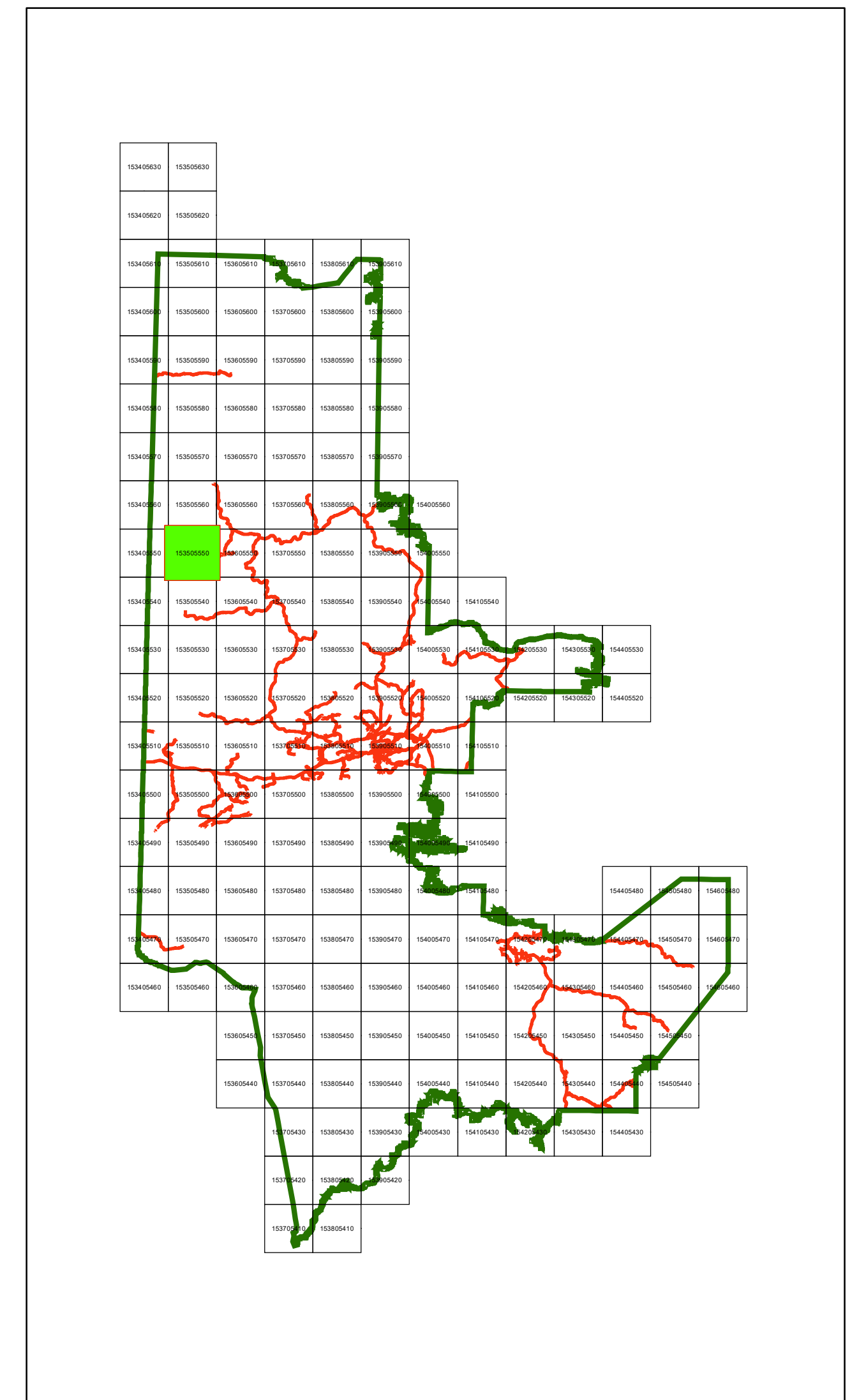




Kenora Forest 2022-2032 Forest Management Plan Area Selected for Operations Mapsheet: 35555

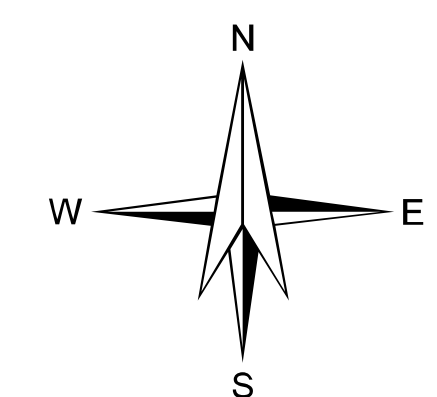
Key Map



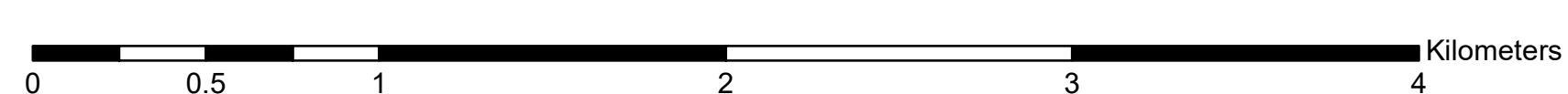
Legend

● Communities	■ Parks / Conservation Reserves
▲ Category 9 Pit	■ First Nations Reserve
▲ Forestry Aggregate Pit	■ Archaeological Potential Areas
— Permanent	■ Road Corridors
— Intermittent	■ Operational Road Boundaries
— Access Controlled	■ Patent Land / LUP
— Decommissioned	■ Brush/Alder
— Highway	■ Open Muskeg
— Primary	■ Rock
— Branch	■ Treed Muskeg
— Operational	■ Crown Lease
— Trails	■ Kameer_LK_Recreation_Area
— Hydro Line	■ Moose Aquatic Feeding (MAFA)
— Natural Gas Pipeline	■ Low Residual Zone
— Rail Line	■ Modified Harvest
■ Kenora SFL Boundary	■ No Cut Reserve
■ Mapsheet	■ Forest Stand Boundaries
■ Cool	■ Wood Storage Yard
■ Cold	■ Planned Harvest
■ Non SFL Aggregate Permit	■ Contingency
■ Aggregate Extraction Area	■ Bridging

W01 AOC code (e.g.)
64400065 Stand Number
POD-83yrs-3.5-0.75 Forest Unit, Age, Height, Stocking



1:20,000



NOTES
North American Datum 1983
UTM 6 degrees projection, Zone 15
This map is for illustrative purposes only.
Do not rely on it as a precise indicator of routes,
location of features, or as a guide to navigation.

note:
- All areas identified for harvest are eligible for renewal activities
- Fuelwood is available in harvest blocks as per the conditions in the AWS text
- Contact Kenora District MNR for fuelwood permit

Map Created: November, 2021