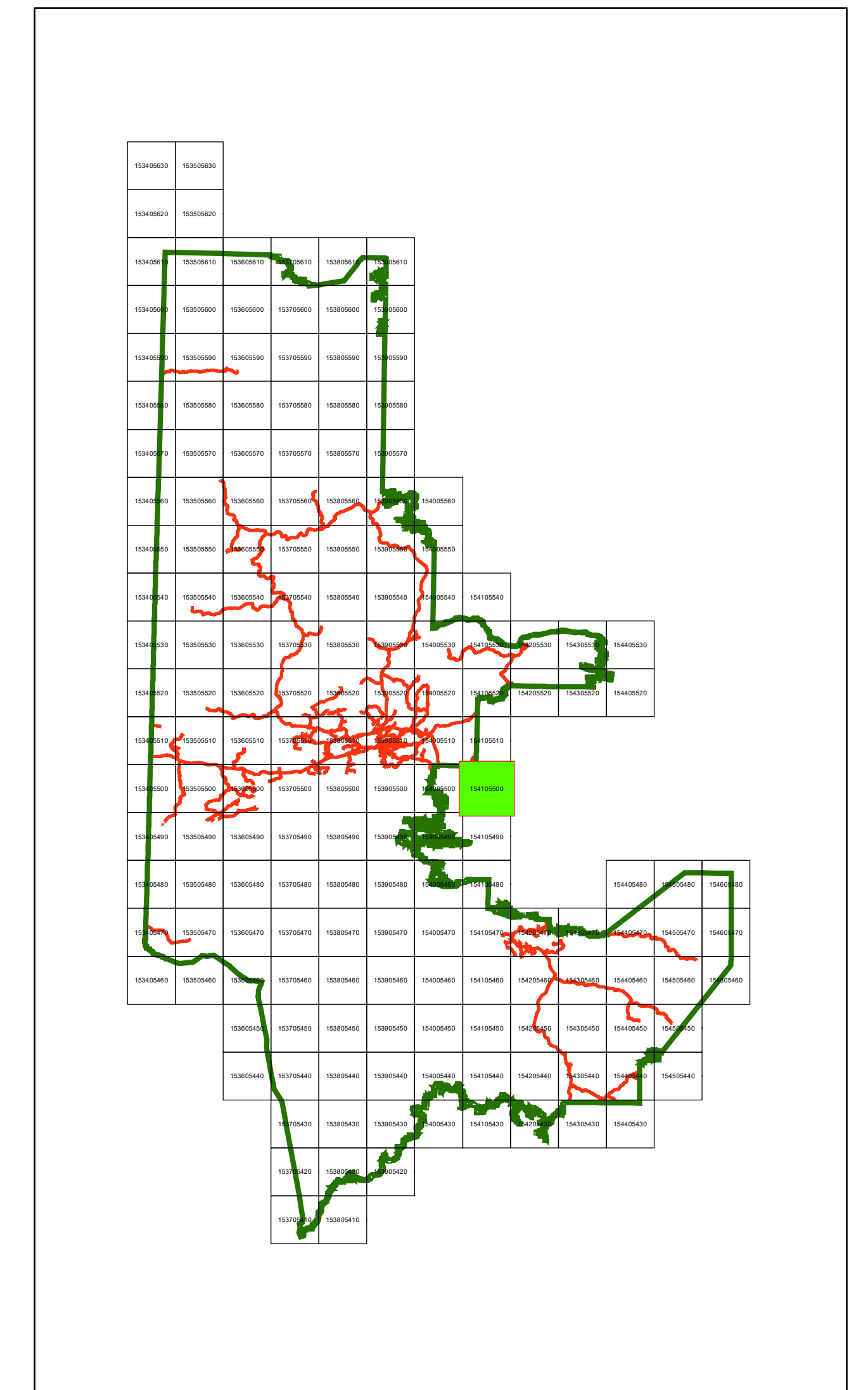
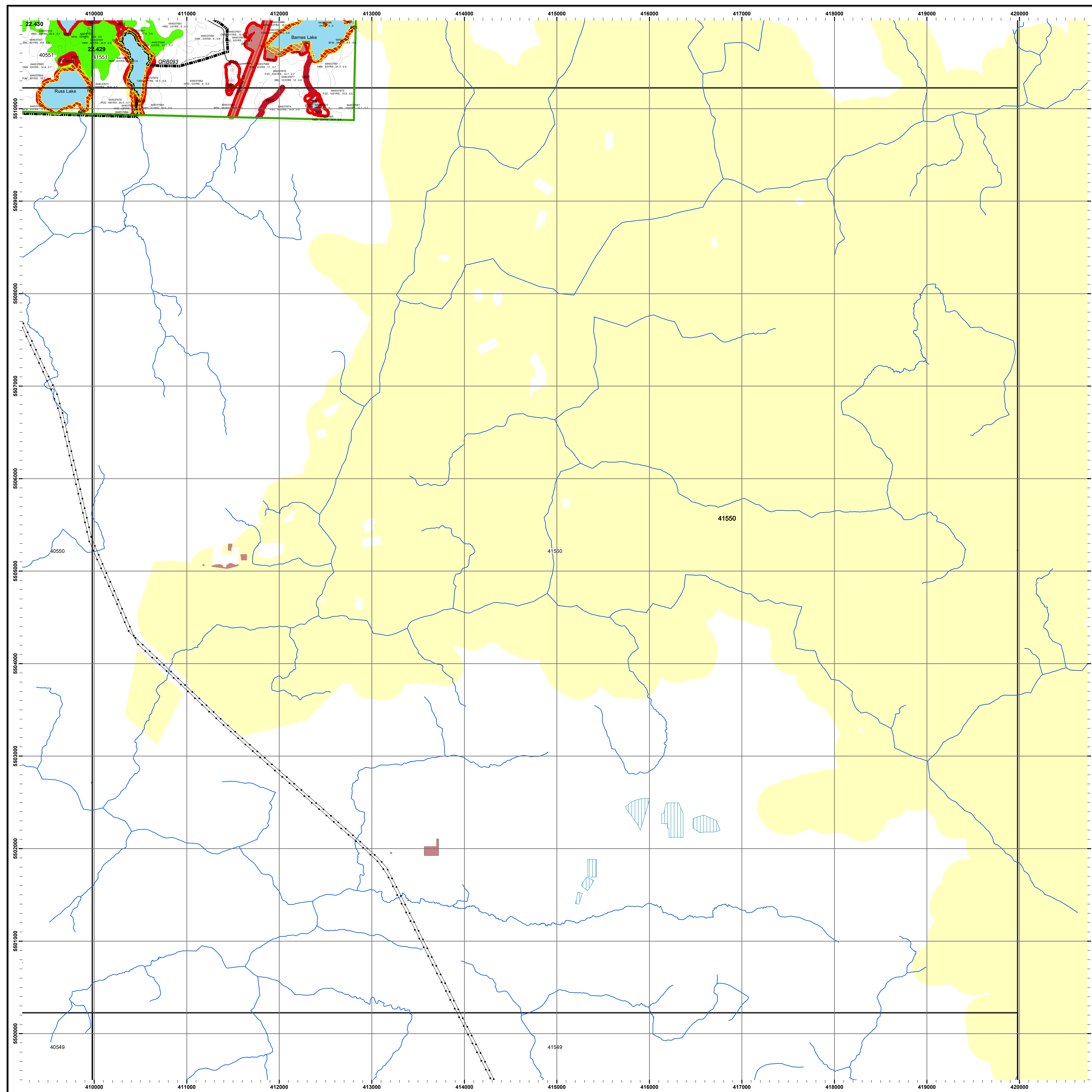




Kenora Forest 2022-2032 Forest Management Plan Area Selected for Operations Mapsheet: 41550

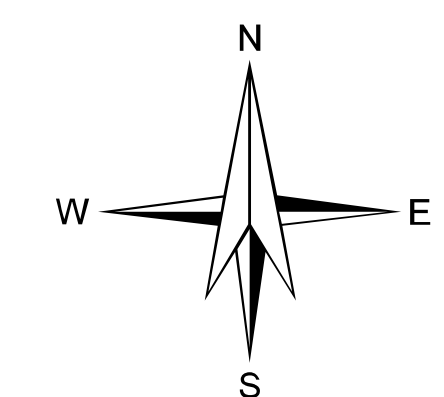
Key Map



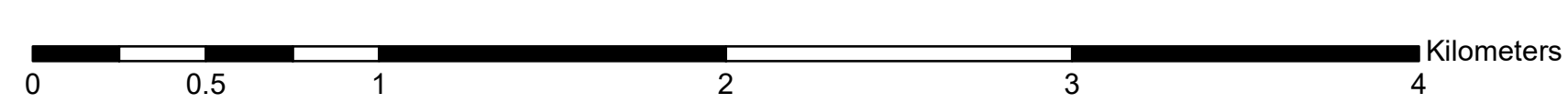
Legend

• Communities	Yellow shaded area Parks / Conservation Reserves
Category 9 Pit	Grey shaded area First Nations Reserve
Forestry Aggregate Pit	Yellow hatched area Archaeological Potential Areas
Permanent	Blue hatched area Road Corridors
Intermittent	Black dashed line Operational Road Boundaries
Access Controlled	Red shaded area Patent Land / LUP
Decommissioned	White hatched area Brush/Alder
Highway	Red dashed line Open Muskeg
Primary	Black dashed line Rock
Branch	Black dashed line Treed Muskeg
Operational	Black dashed line Crown Lease
Trails	Black dashed line Kameer_LK_Recreation_Area
Hydro Line	Black dashed line Moose Aquatic Feeding (MAFA)
Natural Gas Pipeline	Black dashed line Low Residual Zone
Rail Line	Black dashed line Modified Harvest
Kenora SFL Boundary	Red shaded area No Cut Reserve
Mapsheet	Black dashed line Forest Stand Boundaries
Cool	Blue shaded area Wood Storage Yard
Cold	Blue shaded area Planned Harvest
Non SFL Aggregate Permit	Blue shaded area Contingency
Aggregate Extraction Area	Blue shaded area Bridging

W01 AOC code (e.g.)
64400065 Stand Number
POD-93yrs-3.5-0.75 Forest Unit, Age, Height, Stocking



1:20,000



NOTES
North American Datum 1983
UTM 6 degrees projection, Zone 15
This map is for illustrative purposes only.
Do not rely on it as a precise indicator of routes,
location of features, or as a guide to navigation.

note:
- All areas identified for harvest are eligible for renewal activities
- Fuelwood is available in harvest blocks as per the conditions in the AWS text
- Contact Kenora District MNR for fuelwood permit

Map Created: November, 2021