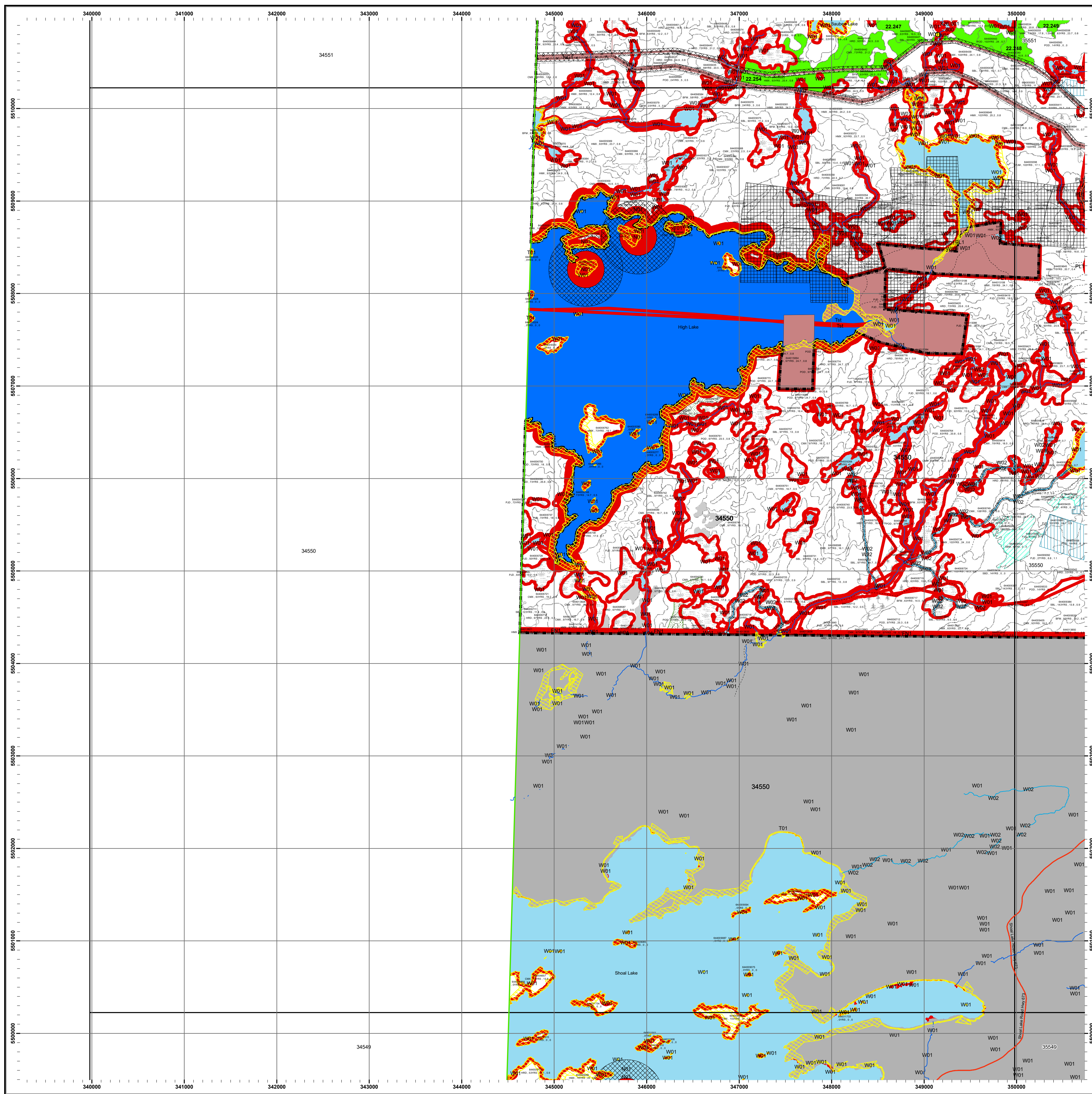
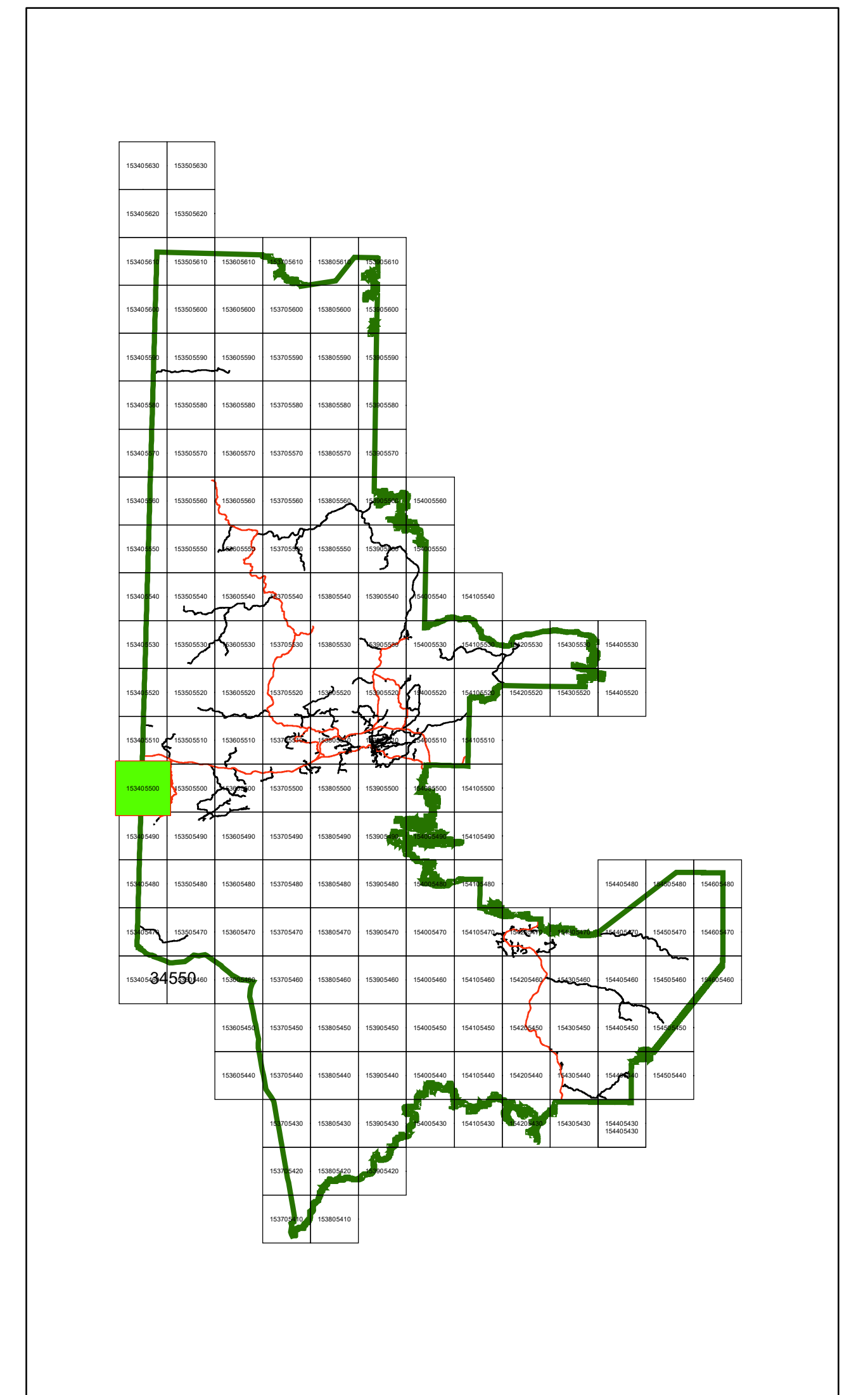




Kenora Forest 2022-2032 Forest Management Plan Annual Work Schedule Operations Map Year: 2026 - 2027 Mapsheet: 34550

Key Map



Legend

● Communities	Archaeological Potential Areas
★ Water Crossing - APA	Patent Land / LUP
● Access Control Point	Brush/Alder
▲ Category 9 Pit	Open Muskeg
▲ Forestry Aggregate Pit	Rock
● Existing Water Crossing	Treed Muskeg
— Permanent	Crown Lease
— Intermittent	Forest Stand Boundaries
— Access Control	Wood Storage Yards
— Highway	Road Corridors
— Hydro Line	Operational Road Boundaries
— Natural Gas Pipeline	Residual Patches
— Rail Line	Modified Harvest
— SFL Boundary	No Cut Reserve
— Mapsheet	HARVCAT
— Cool Lakes	BRIDGING
— Cold Lakes	REGULAR
— Non SFL Aggregate Permit	SALVAGE
— Parks / Conservation Reserves	PLANT
— First Nations Reserve	SEED
	Establishment Surveys

W01 AOC code (e.g.)
64400065 Stand Number
POD-93yrs-3.5-0.75 Forest Unit, Age, Height, Stocking



NOTES
North American Datum 1983
UTM 6 degrees projection, Zone 15
This map is for illustrative purposes only.
Do not rely on it as a precise indicator of routes,
location of features, or as a guide to navigation.
Copyright 2025 Kings Printer for Ontario
Printed in Ontario, Canada

1:20,000



note:
- All areas identified for harvest are eligible for renewal activities
- Fuelwood is available in harvest blocks as per the conditions in the AWS text

Map Created: February 2025

34550