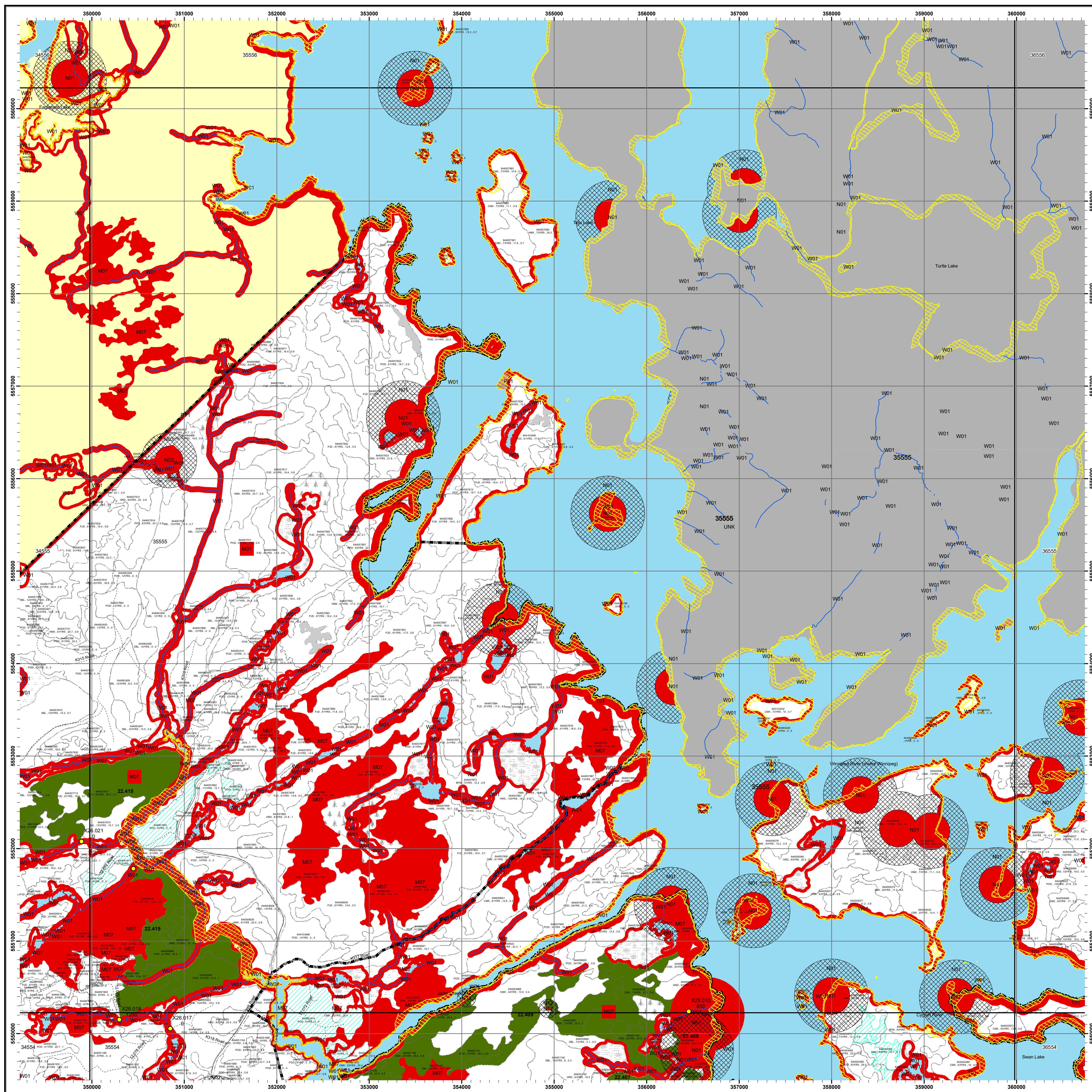
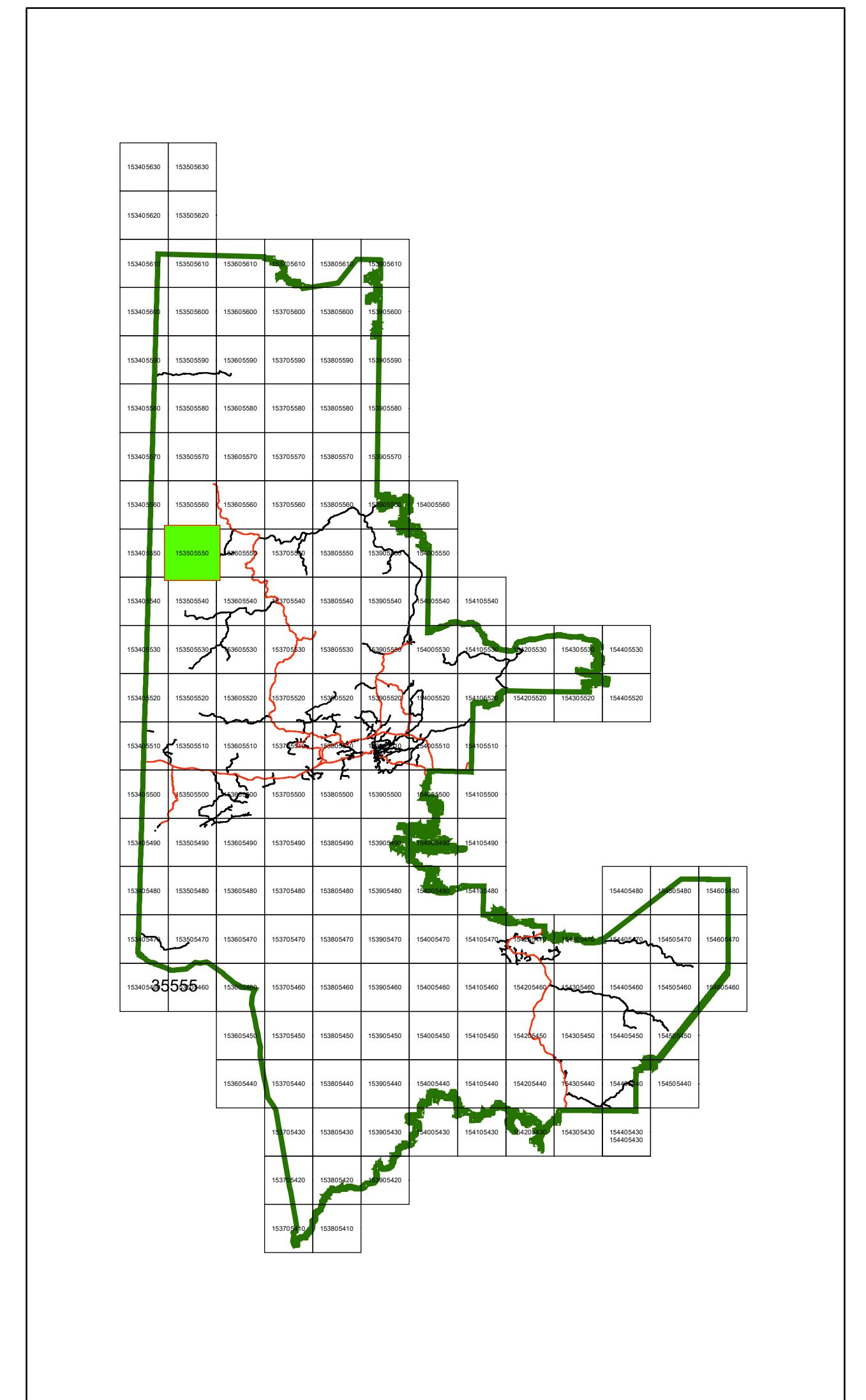




Kenora Forest 2022-2032 Forest Management Plan Annual Work Schedule Operations Map Year: 2026 - 2027 Mapsheet: 35555

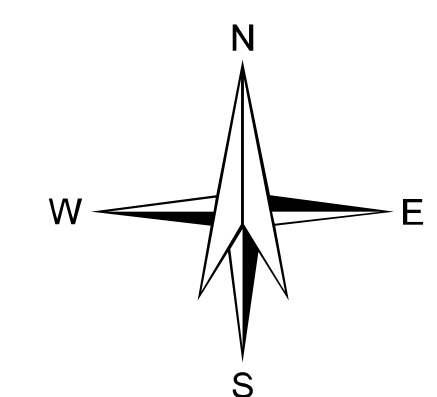
Key Map



Legend

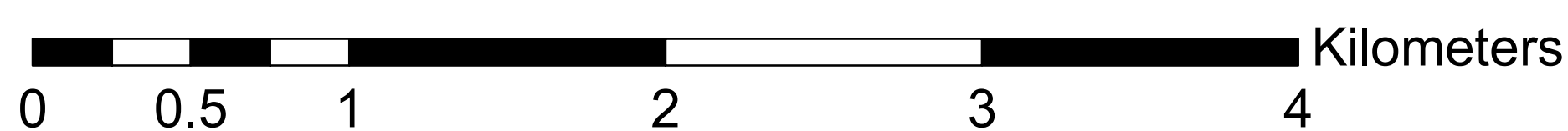
- | | |
|-------------------------------|--------------------------------|
| • Communities | Archaeological Potential Areas |
| Water Crossing | Patent Land / LUP |
| Water Crossing - APA | Brush/Alder |
| • Access Control Point | Open Muskeg |
| Category 9 Pit | Rock |
| Forestry Aggregate Pit | Treed Muskeg |
| Existing Water Crossing | Crown Lease |
| Permanent | Forest Stand Boundaries |
| Intermittent | Wood Storage Yards |
| Access Control | Road Corridors |
| Highway | Operational Road Boundaries |
| Hydro Line | Residual Patches |
| Natural Gas Pipeline | Modified Harvest |
| Rail Line | No Cut Reserve |
| SFL Boundary | HARVCAT |
| Mapsheet | BRIDGING |
| Cool Lakes | REGULAR |
| Cold Lakes | SALVAGE |
| Non SFL Aggregate Permit | PLANT |
| Parks / Conservation Reserves | SEED |
| First Nations Reserve | Establishment Surveys |

W01 AOC code (e.g.)
64400065 Stand Number
POD-93yrs-3.5-0.75 Forest Unit, Age, Height, Stocking



NOTES
North American Datum 1983
UTM 6 degrees projection, Zone 15
This map is for illustrative purposes only.
Do not rely on it as a precise indicator of routes,
location of features, or as a guide to navigation.
Copyright 2025 Kings Printer for Ontario
Printed in Ontario, Canada

1:20,000



note:
- All areas identified for harvest are eligible for renewal activities
- Fuelwood is available in harvest blocks as per the conditions in the AWS text

Map Created: February 2025