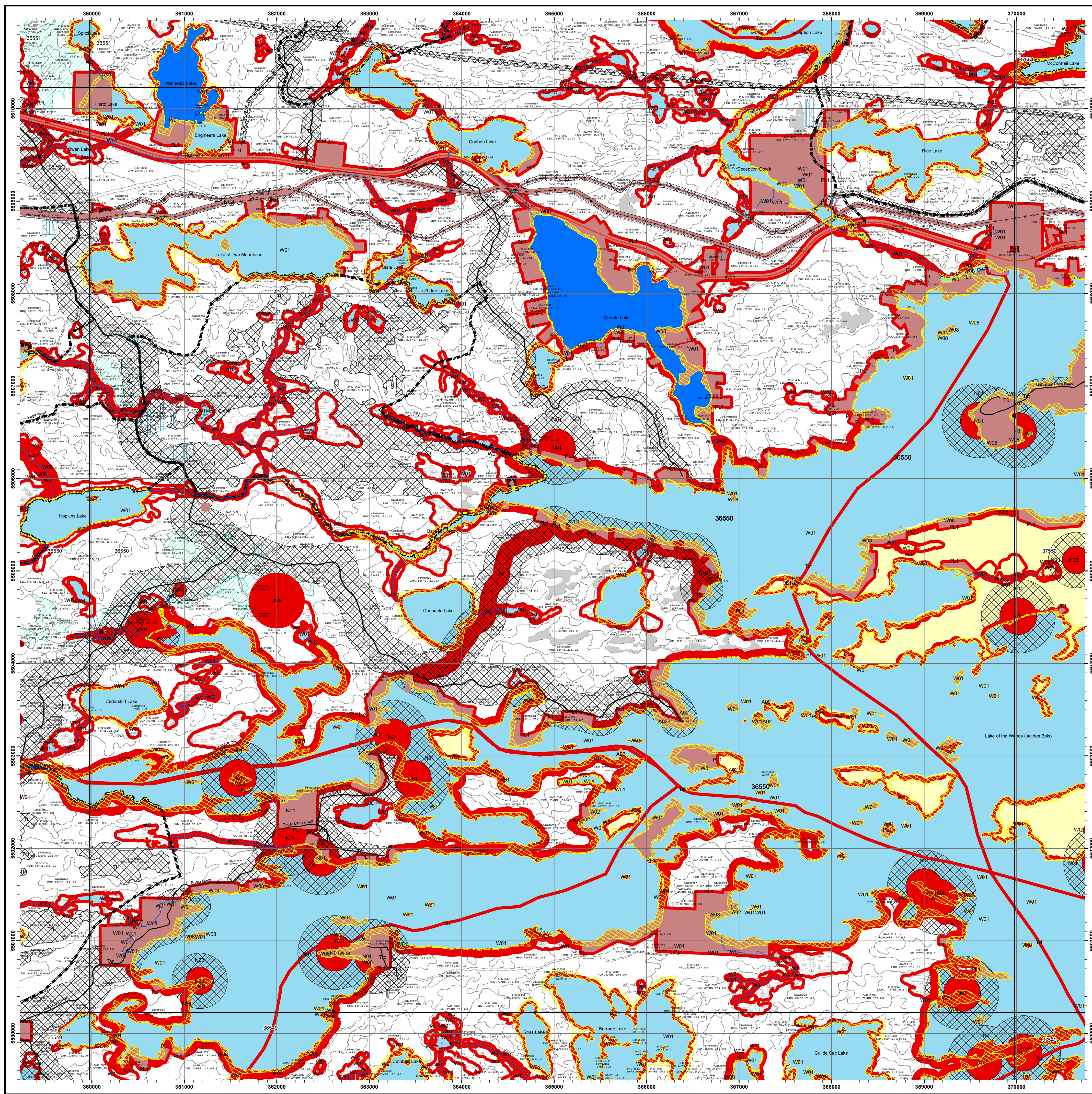
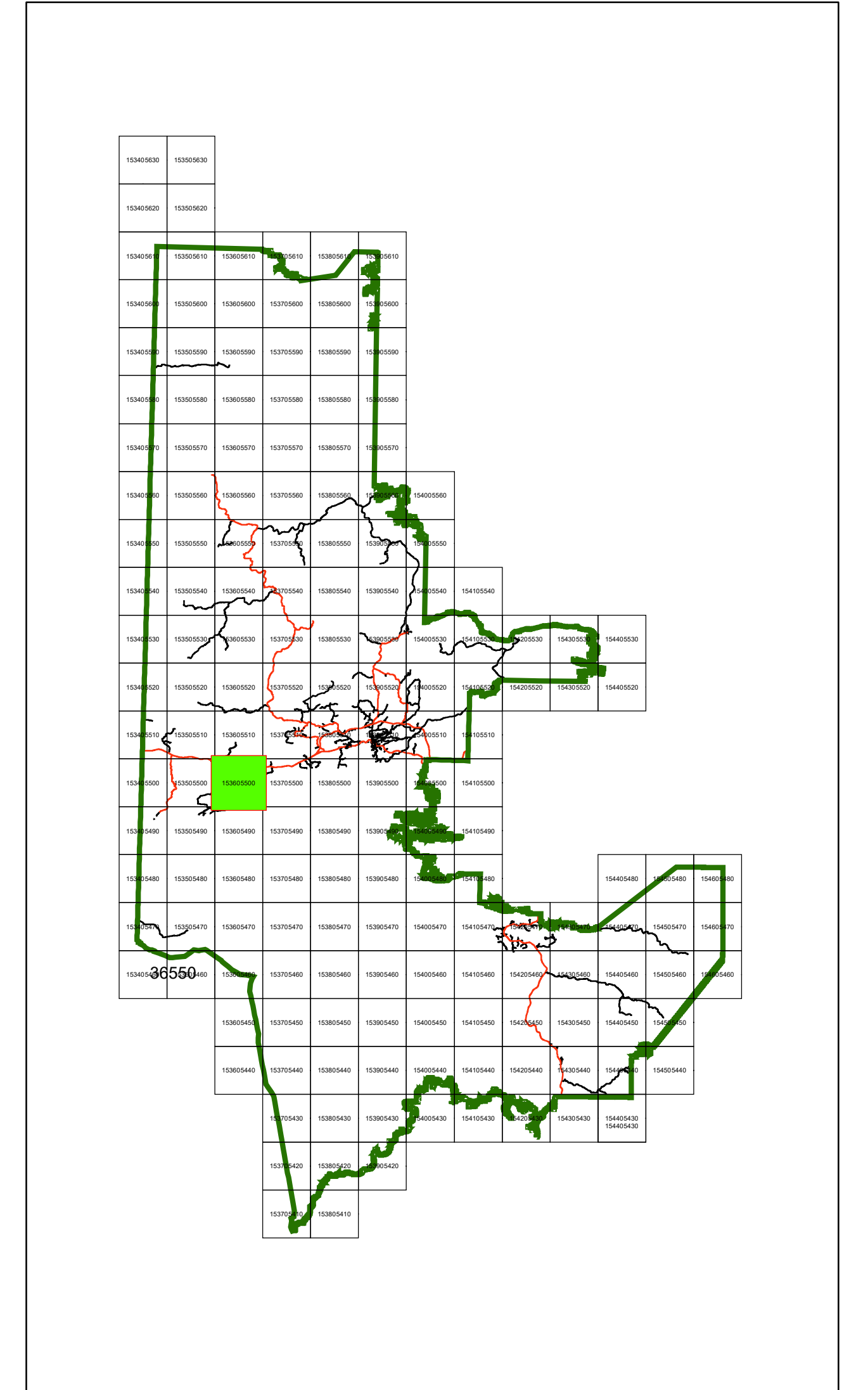




Kenora Forest 2022-2032 Forest Management Plan Annual Work Schedule Operations Map Year: 2026 - 2027 Mapsheet: 36550

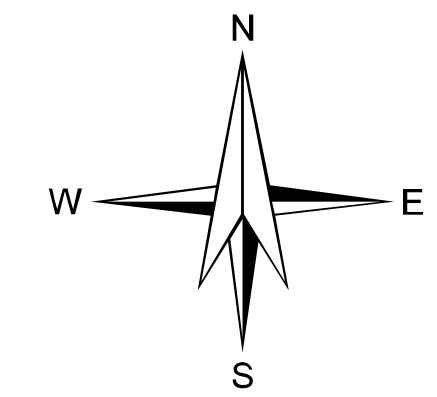
Key Map



Legend

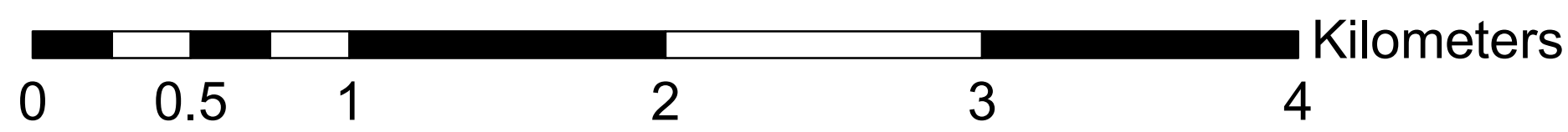
| | |
|---------------------------------|--------------------------------|
| ● Communities | Archaeological Potential Areas |
| ☆ Water Crossing - APA | Patent Land / LUP |
| ● Access Control Point | Brush/Alder |
| ▲ Category 9 Pit | Open Muskeg |
| ▲ Forestry Aggregate Pit | Rock |
| ● Existing Water Crossing | Tree Muskeg |
| — Permanent | Crown Lease |
| — Intermittent | Forest Stand Boundaries |
| — Access Control | Wood Storage Yards |
| — Highway | Road Corridors |
| — Hydro Line | Operational Road Boundaries |
| — Natural Gas Pipeline | Residual Patches |
| — Rail Line | Modified Harvest |
| □ SFL Boundary | No Cut Reserve |
| □ Mapsheet | HARVCAT |
| □ Cool Lakes | BRIDGING |
| □ Cold Lakes | REGULAR |
| □ Non SFL Aggregate Permit | SALVAGE |
| □ Parks / Conservation Reserves | PLANT |
| □ First Nations Reserve | SEED |
| | Establishment Surveys |

W01 AOC code (e.g.)
64400065 Stand Number
POD-93yrs-3.5-0.75 Forest Unit, Age, Height, Stocking



NOTES
North American Datum 1983
UTM 6 degrees projection, Zone 15
This map is for illustrative purposes only.
Do not rely on it as a precise indicator of routes,
location of features, or as a guide to navigation.
Copyright 2025 Kings Printer for Ontario
Printed in Ontario, Canada

1:20,000



note:
- All areas identified for harvest are eligible for renewal activities
- Fuelwood is available in harvest blocks as per the conditions in the AWS text

Map Created: February 2025