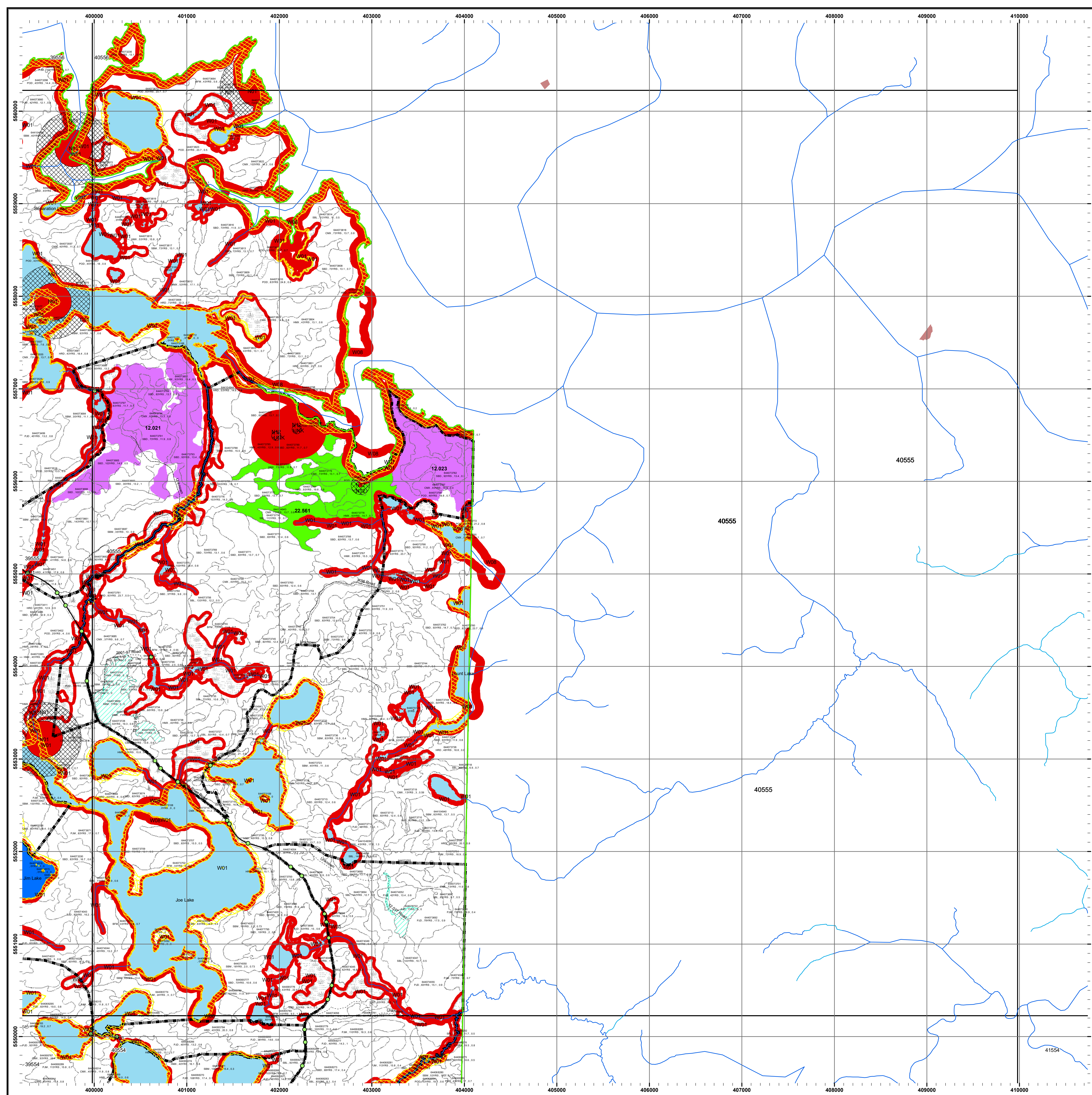
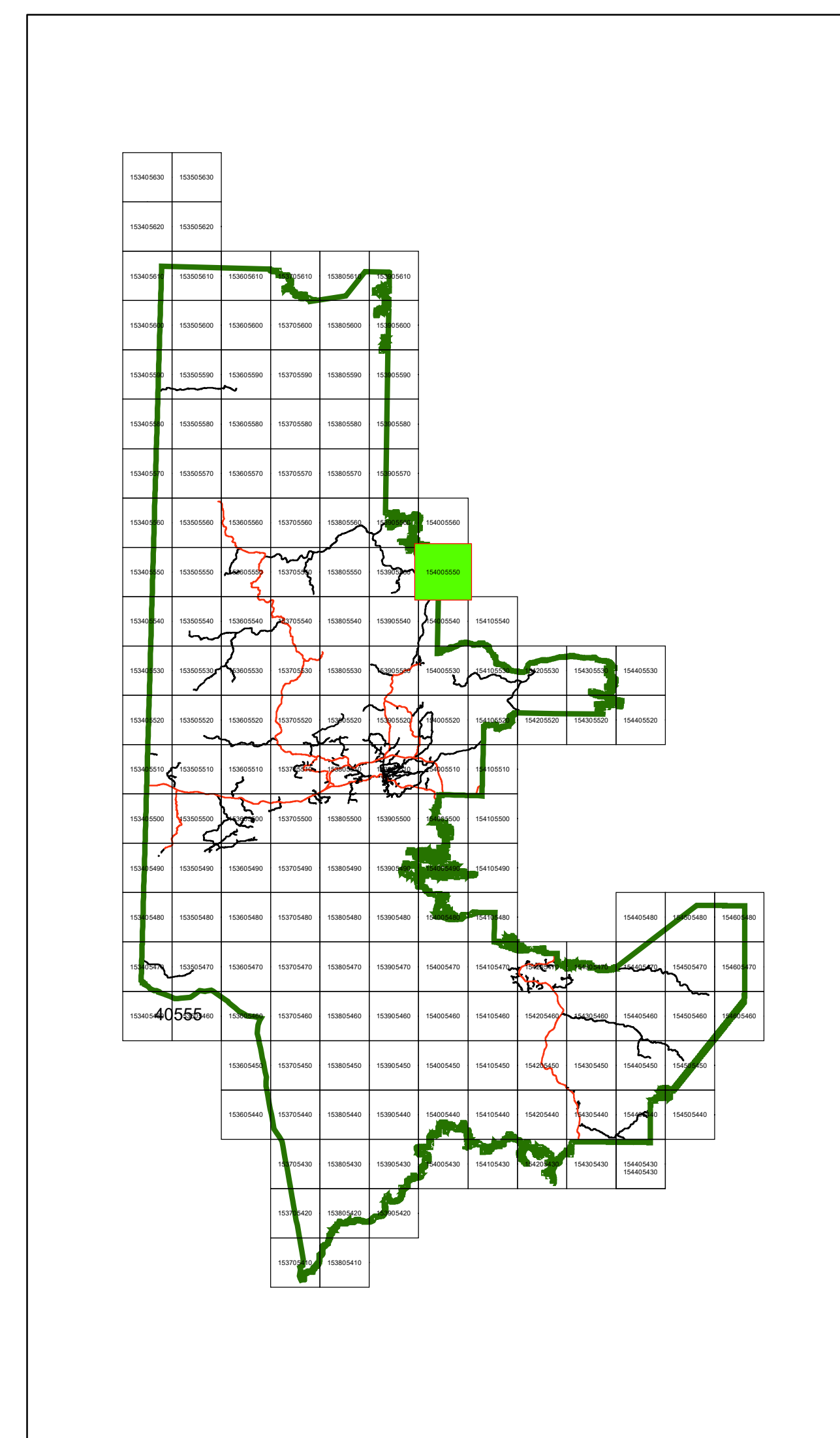




# Kenora Forest 2022-2032 Forest Management Plan Annual Work Schedule Operations Map Year: 2026 - 2027 Mapsheet: 40555

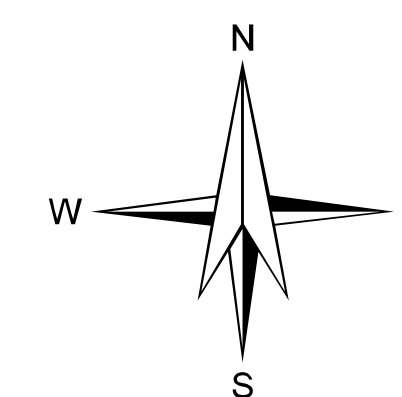
## Key Map



## Legend

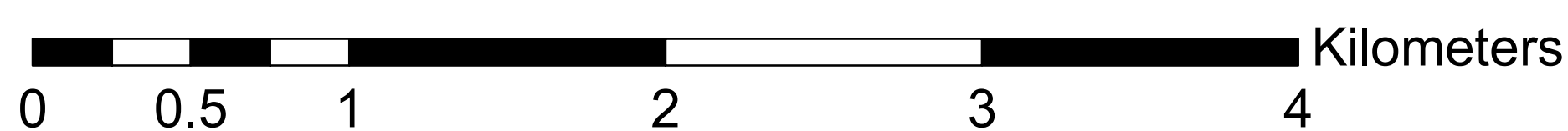
● Communities	Archaeological Potential Areas
○ Water Crossing	Patent Land / LUP
★ Water Crossing - APA	Brush/Alder
● Access Control Point	Open Muskeg
▲ Category 9 Pit	Rock
▲ Forestry Aggregate Pit	Treed Muskeg
○ Existing Water Crossing	Crown Lease
— Permanent	Forest Stand Boundaries
— Intermittent	Wood Storage Yards
— Access Control	Road Corridors
— Highway	Operational Road Boundaries
— Hydro Line	Residual Patches
— Natural Gas Pipeline	Modified Harvest
— Rail Line	No Cut Reserve
□ SFL Boundary	<b>HARVCAT</b>
□ Mapsheet	BRIDGING
□ Cool Lakes	REGULAR
□ Cold Lakes	SALVAGE
□ Non SFL Aggregate Permit	PLANT
□ Parks / Conservation Reserves	SEED
□ First Nations Reserve	Establishment Surveys

W01 AOC code (e.g.)  
64400065 Stand Number  
POD-93yrs-3.5-0.75 Forest Unit, Age, Height, Stocking



**NOTES**  
North American Datum 1983  
UTM 6 degrees projection, Zone 15  
This map is for illustrative purposes only.  
Do not rely on it as a precise indicator of routes,  
location of features, or as a guide to navigation.  
Copyright 2025 Kings Printer for Ontario  
Printed in Ontario, Canada

1:20,000



**note:**  
- All areas identified for harvest are eligible for renewal activities  
- Fuelwood is available in harvest blocks as per the conditions in the AWS text

Map Created: February 2025