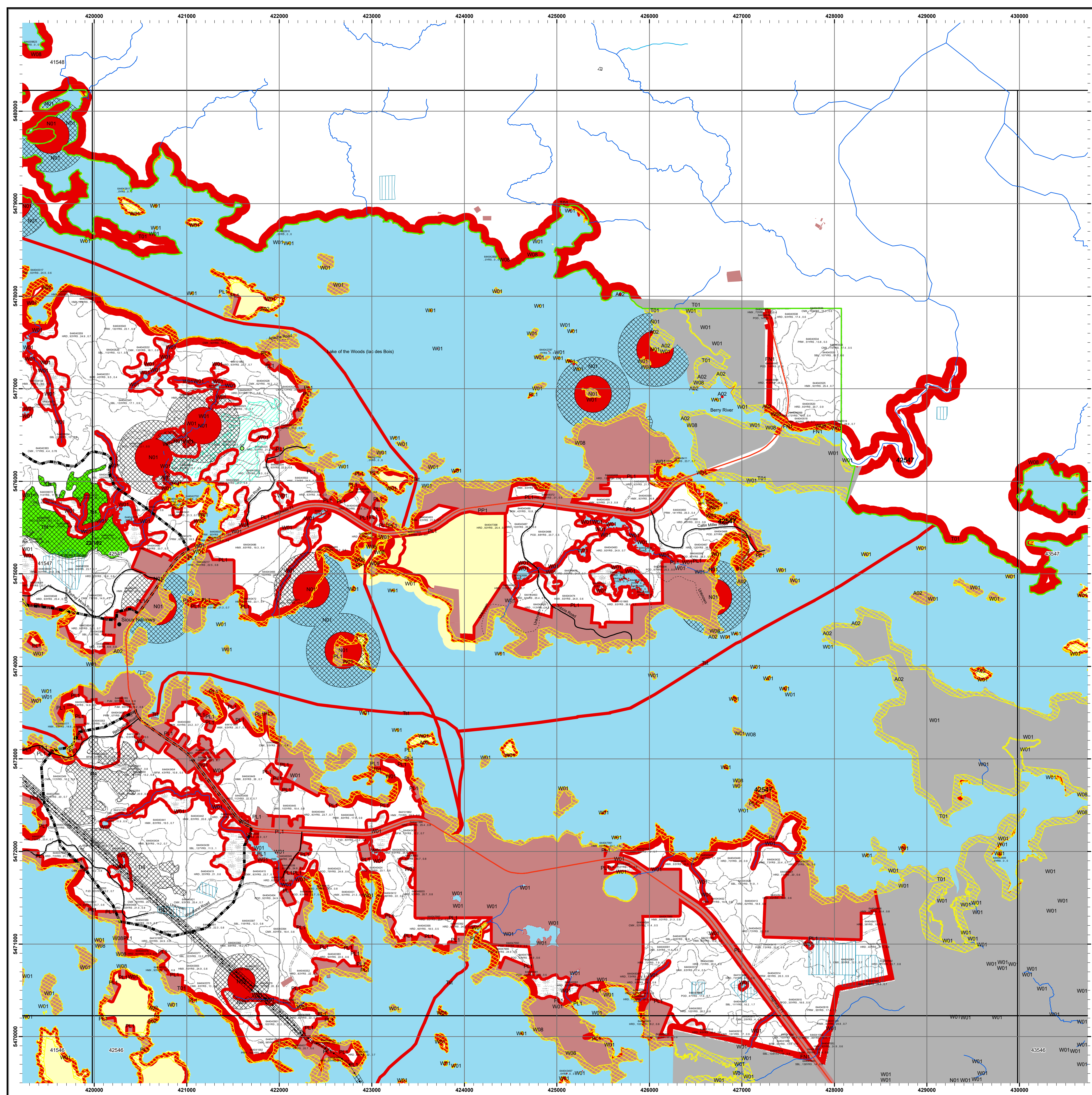
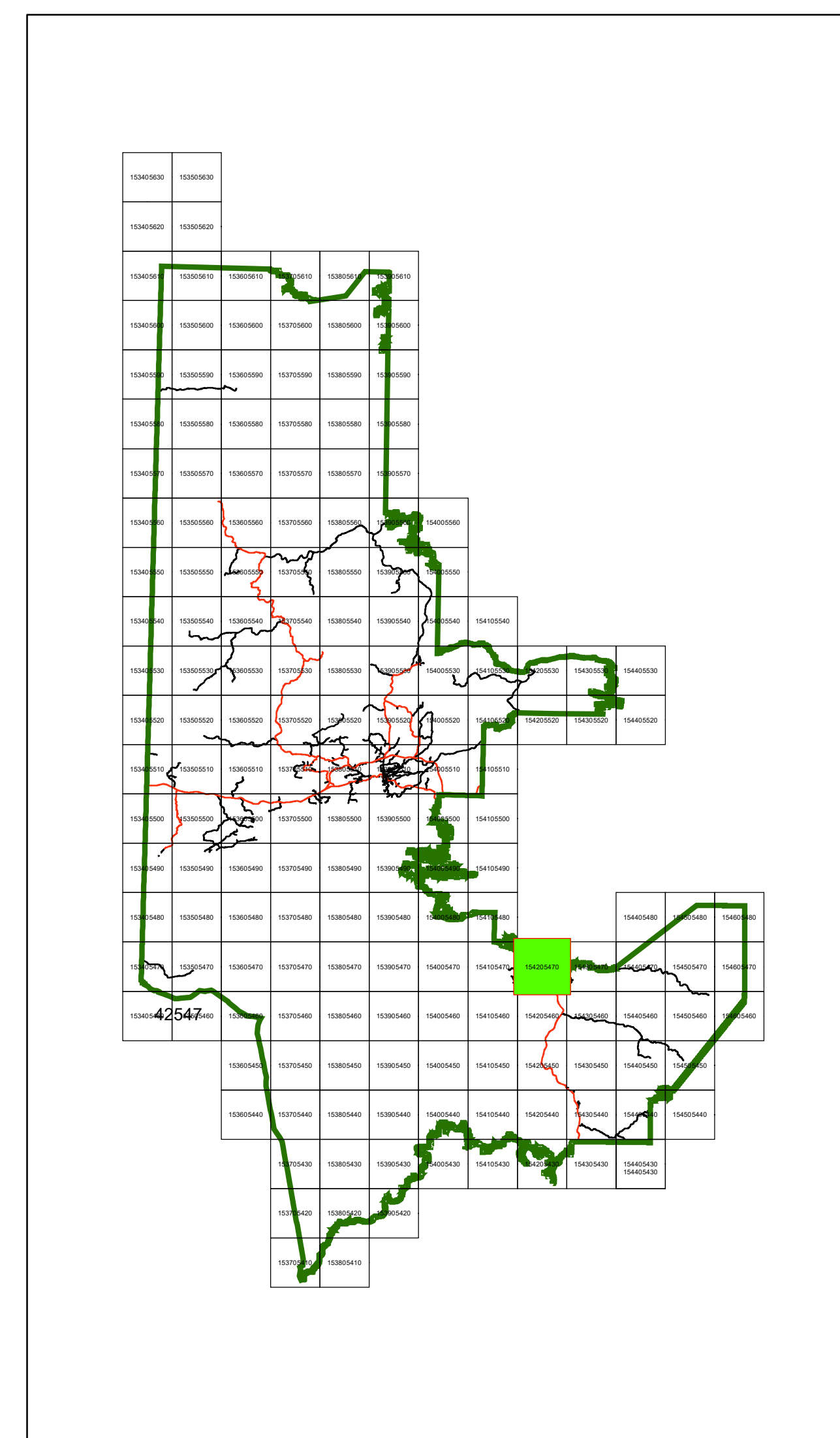




# Kenora Forest 2022-2032 Forest Management Plan Annual Work Schedule Operations Map Year: 2026 - 2027 Mapsheet: 42547

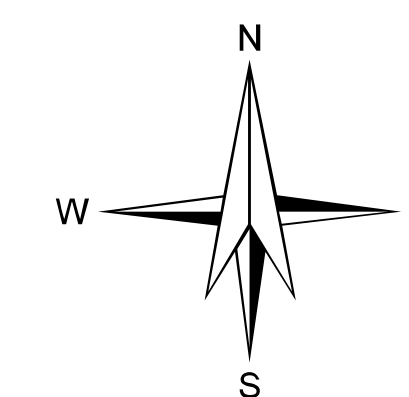
## Key Map



## Legend

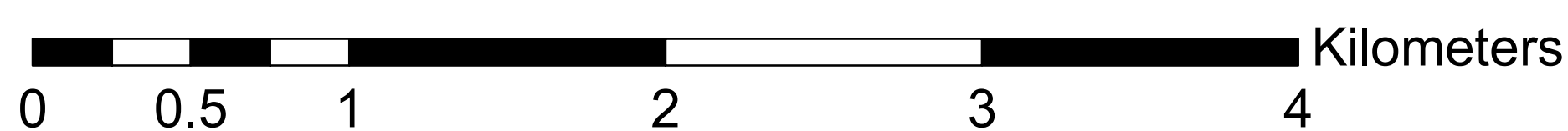
- |                                 |                                |
|---------------------------------|--------------------------------|
| • Communities                   | Archaeological Potential Areas |
| ☆ Water Crossing - APA          | Patent Land / LUP              |
| • Access Control Point          | Brush/Alder                    |
| ▲ Category 9 Pit                | Open Muskeg                    |
| ▲ Forestry Aggregate Pit        | Rock                           |
| ○ Existing Water Crossing       | Tree Muskeg                    |
| — Permanent                     | Crown Lease                    |
| — Intermittent                  | Forest Stand Boundaries        |
| — Access Control                | Wood Storage Yards             |
| — Highway                       | Road Corridors                 |
| — Hydro Line                    | Operational Road Boundaries    |
| — Natural Gas Pipeline          | Residual Patches               |
| — Rail Line                     | Modified Harvest               |
| □ SFL Boundary                  | No Cut Reserve                 |
| □ Mapsheet                      | <b>HARVCAT</b>                 |
| □ Cool Lakes                    | BRIDGING                       |
| □ Cold Lakes                    | REGULAR                        |
| □ Non SFL Aggregate Permit      | SALVAGE                        |
| □ Parks / Conservation Reserves | PLANT                          |
| □ First Nations Reserve         | SEED                           |
|                                 | Establishment Surveys          |

W01 AOC code (e.g.)  
64400065 Stand Number  
POD-93yrs-3.5-0.75 Forest Unit, Age, Height, Stocking



**NOTES**  
North American Datum 1983  
UTM 6 degrees projection, Zone 15  
This map is for illustrative purposes only.  
Do not rely on it as a precise indicator of routes,  
location of features, or as a guide to navigation.  
Copyright 2025 Kings Printer for Ontario  
Printed in Ontario, Canada

1:20,000



**note:**  
- All areas identified for harvest are eligible for renewal activities  
- Fuelwood is available in harvest blocks as per the conditions in the AWS text

Map Created: February 2025